

Product datasheet for **TA344251**

MYCBPAP Rabbit Polyclonal Antibody

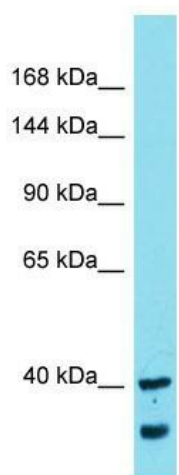
Product data:

Product Type:	Primary Antibodies
Applications:	WB
Recommended Dilution:	WB
Reactivity:	Human
Host:	Rabbit
Isotype:	IgG
Clonality:	Polyclonal
Immunogen:	The immunogen for Anti-MYCBPAP antibody is: synthetic peptide directed towards the N-terminal region of Human MYCBPAP. Synthetic peptide located within the following region: ASENVKEKKRAKGPEQPTPTIQEEPEPVSNNVLQGDDILALAIKKEDLKEQ
Formulation:	Liquid. Purified antibody supplied in 1x PBS buffer with 0.09% (w/v) sodium azide and 2% sucrose.
Purification:	Affinity Purified
Conjugation:	Unconjugated
Storage:	Store at -20°C as received.
Stability:	Stable for 12 months from date of receipt.
Predicted Protein Size:	34 kDa
Gene Name:	MYCBP associated protein
Database Link:	NP_115509 Entrez Gene 84073 Human Q8TBZ2
Background:	The function of this protein remains unknown.
Synonyms:	AMAP-1; AMAP1
Note:	Immunogen Sequence Homology: Human: 100%; Dog: 92%; Pig: 92%; Rat: 92%; Mouse: 92%; Bovine: 92%; Rabbit: 85%; Guinea pig: 85%; Horse: 77%



[View online »](#)

Product images:



Host: Rabbit; Target Name: MYCBPAP; Sample
Tissue: Uterus Tumor lysates; Antibody Dilution:
1.0 ug/ml