

Product datasheet for **TA344245**

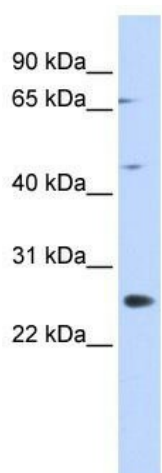
SPATA22 Rabbit Polyclonal Antibody

Product data:

Product Type:	Primary Antibodies
Applications:	WB
Recommended Dilution:	WB
Reactivity:	Human
Host:	Rabbit
Isotype:	IgG
Clonality:	Polyclonal
Immunogen:	The immunogen for anti-SPATA22 antibody: synthetic peptide directed towards the N terminal of human SPATA22. Synthetic peptide located within the following region: MKRSLSENSARSTAGCLPVPLFNQKKRNRQPLTSNPLKDDSGISTPSDNY
Formulation:	Liquid. Purified antibody supplied in 1x PBS buffer with 0.09% (w/v) sodium azide and 2% sucrose. <i>Note that this product is shipped as lyophilized powder to China customers.</i>
Purification:	Affinity Purified
Conjugation:	Unconjugated
Storage:	Store at -20°C as received.
Stability:	Stable for 12 months from date of receipt.
Predicted Protein Size:	40 kDa
Gene Name:	spermatogenesis associated 22
Database Link:	NP_115987 Entrez Gene 84690 Human Q8NHS9
Background:	SPATA22 is highly expressed in adult testis. The specific function of SPATA22 is not yet known.
Synonyms:	NYD-SP20; NYDSP20
Note:	Immunogen Sequence Homology: Dog: 100%; Pig: 100%; Rat: 100%; Horse: 100%; Human: 100%; Mouse: 100%; Bovine: 100%; Rabbit: 100%; Guinea pig: 100%



[View online »](#)

Product images:

WB Suggested Anti-SPATA22 Antibody Titration:
0.2-1 ug/ml; ELISA Titer: 1:1562500; Positive
Control: 293T cell lysate