

Product datasheet for **TA344241**

UBA1 Rabbit Polyclonal Antibody

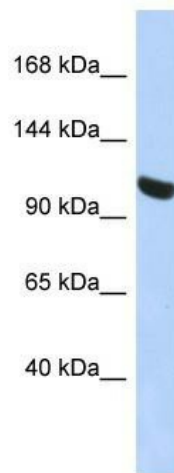
Product data:

Product Type:	Primary Antibodies
Applications:	WB
Recommended Dilution:	WB
Reactivity:	Human
Host:	Rabbit
Isotype:	IgG
Clonality:	Polyclonal
Immunogen:	The immunogen for anti-UBA1 antibody: synthetic peptide directed towards the N terminal of human UBA1. Synthetic peptide located within the following region: MEAGPPGSARPAEPGPCLSGQRGADHTASASLSVAGTEPGRHPQAVAAV
Formulation:	Liquid. Purified antibody supplied in 1x PBS buffer with 0.09% (w/v) sodium azide and 2% sucrose. <i>Note that this product is shipped as lyophilized powder to China customers.</i>
Purification:	Affinity Purified
Conjugation:	Unconjugated
Storage:	Store at -20°C as received.
Stability:	Stable for 12 months from date of receipt.
Predicted Protein Size:	116 kDa
Gene Name:	ubiquitin like modifier activating enzyme 1
Database Link:	NP_003325 Entrez Gene 7317 Human P22314



[View online »](#)

Background:	UBA1 activates ubiquitin by first adenylating its C-terminal glycine residue with ATP, and thereafter linking this residue to the side chain of a cysteine residue in E1, yielding an ubiquitin-E1 thioester and free AMP. The protein encoded by this gene catalyzes the first step in ubiquitin conjugation to mark cellular proteins for degradation. This gene complements an X-linked mouse temperature-sensitive defect in DNA synthesis, and thus may function in DNA repair. It is part of a gene cluster on chromosome Xp11.23. Alternatively spliced transcript variants that encode the same protein have been described.
Synonyms:	A1S9; A1S9T; A1ST; AMCX1; CFAP124; GXP1; POC20; SMA2; UBA1A; UBE1; UBE1X
Note:	Immunogen Sequence Homology: Dog: 100%; Pig: 100%; Rat: 100%; Horse: 100%; Human: 100%; Mouse: 100%; Bovine: 100%; Rabbit: 100%; Guinea pig: 100%
Protein Pathways:	Parkinson's disease, Ubiquitin mediated proteolysis

Product images:

WB Suggested Anti-UBA1 Antibody Titration: 0.2-1 ug/ml; ELISA Titer: 1:1562500; Positive Control: HepG2 cell lysate