

## Product datasheet for **TA344240**

### KPC2 (UBAC1) Rabbit Polyclonal Antibody

#### Product data:

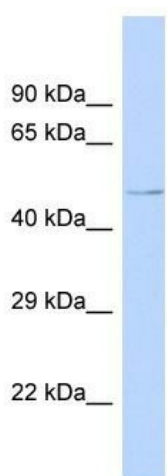
Product Type:	Primary Antibodies
Applications:	WB
Recommended Dilution:	WB
Reactivity:	Human
Host:	Rabbit
Isotype:	IgG
Clonality:	Polyclonal
Immunogen:	The immunogen for Anti-UBAC1 antibody is: synthetic peptide directed towards the N-terminal region of Human UBAC1. Synthetic peptide located within the following region: DGAEWLEEATEDTSVEKLERCLKHCAHGSLEDPKSITHHKLIIHAASERV
Formulation:	Liquid. Purified antibody supplied in 1x PBS buffer with 0.09% (w/v) sodium azide and 2% sucrose. <i>Note that this product is shipped as lyophilized powder to China customers.</i>
Purification:	Affinity Purified
Conjugation:	Unconjugated
Storage:	Store at -20°C as received.
Stability:	Stable for 12 months from date of receipt.
Predicted Protein Size:	44 kDa
Gene Name:	UBA domain containing 1
Database Link:	<a href="#">NP_057256</a> <a href="#">Entrez Gene 10422 Human Q9BSL1</a>
Background:	UBAC1 is a non-catalytic subunit of the KPC complex that acts as E3 ubiquitin-protein ligase. It is required for poly-ubiquitination and proteasome-mediated degradation of CDKN1B during G1 phase of the cell cycle.
Synonyms:	GBDR1; KPC2; UBADC1
Note:	Immunogen Sequence Homology: Dog: 100%; Rat: 100%; Human: 100%; Mouse: 100%; Pig: 93%; Bovine: 93%; Guinea pig: 93%; Zebrafish: 79%



[View online »](#)

Protein Families: Druggable Genome

### Product images:



Host: Rabbit

Target Name: UBAC1

Sample Tissue: Fetal Brain Lysate

Antibody Dilution: 1.0 $\mu$ g/ml

Host: Rabbit; Target Name: UBAC1; Sample Tissue: Fetal Brain lysates; Antibody Dilution: 1.0 ug/ml