

## Product datasheet for **TA344239**

### UCHL3 Rabbit Polyclonal Antibody

#### Product data:

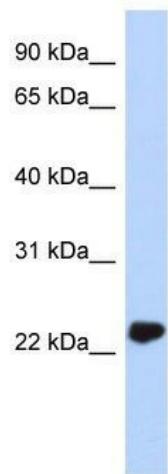
Product Type:	Primary Antibodies
Applications:	IHC, WB
Recommended Dilution:	WB, IHC
Reactivity:	Human, Zebrafish
Host:	Rabbit
Isotype:	IgG
Clonality:	Polyclonal
Immunogen:	The immunogen for anti-UCHL3 antibody: synthetic peptide directed towards the N terminal of human UCHL3. Synthetic peptide located within the following region: MEGQRWLPLEANPEVTNQFLKQLGLHPNWQFVDVYGMPELLSMVPRPVC
Formulation:	Liquid. Purified antibody supplied in 1x PBS buffer with 0.09% (w/v) sodium azide and 2% sucrose. <i>Note that this product is shipped as lyophilized powder to China customers.</i>
Purification:	Affinity Purified
Conjugation:	Unconjugated
Storage:	Store at -20°C as received.
Stability:	Stable for 12 months from date of receipt.
Predicted Protein Size:	25 kDa
Gene Name:	ubiquitin C-terminal hydrolase L3
Database Link:	<a href="#">NP_005993</a> <a href="#">Entrez Gene 7347 Human P15374</a>
Background:	UCHL3 is an ubiquitin-protein hydrolase involved both in the processing of ubiquitin precursors and of ubiquitinated proteins. This enzyme is a thiol protease that recognizes and hydrolyzes a peptide bond at the C-terminal glycine of either ubiquitin or NEDD8.
Synonyms:	UCH-L3
Note:	Immunogen Sequence Homology: Pig: 100%; Rat: 100%; Horse: 100%; Human: 100%; Mouse: 100%; Bovine: 100%; Rabbit: 100%; Guinea pig: 100%; Zebrafish: 86%; Goat: 82%



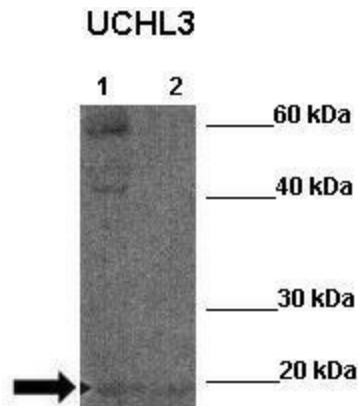
[View online »](#)

Protein Families: Druggable Genome, Protease

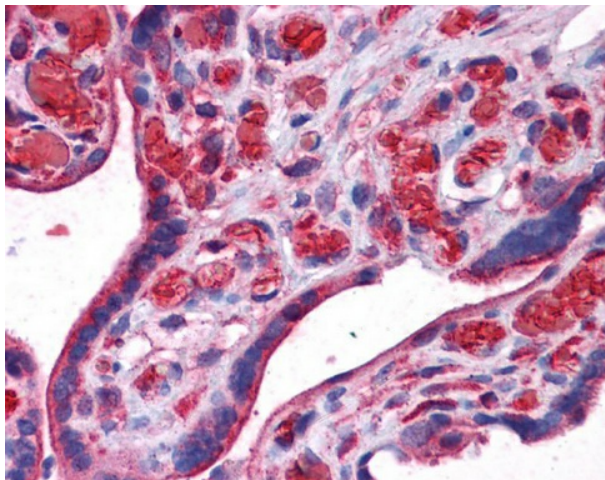
**Product images:**



WB Suggested Anti-UCHL3 Antibody Titration:  
0.2-1 ug/ml; ELISA Titer: 1:1562500; Positive  
Control: MCF7 cell lysate



WB Suggested Anti-UCHL3 Antibody ; Positive  
Control: Lane 1: 30ug Zebrafish skin lysate Lane  
2: 30ug Zebrafish liver lysate; Primary Antibody  
Dilution : 1:1000; Secondary Antibody : Anti-  
rabbit-HRP; Secondary Antibody Dilution : 1:4000;  
Submitted by: Willi



Placenta

