

Product datasheet for **TA344237**

WHSC1 Rabbit Polyclonal Antibody

Product data:

Product Type:	Primary Antibodies
Applications:	WB
Recommended Dilution:	WB
Reactivity:	Rat
Host:	Rabbit
Isotype:	IgG
Clonality:	Polyclonal
Immunogen:	The immunogen for Anti-Wipf1 antibody is: synthetic peptide directed towards the N-terminal region of Rat Wipf1. Synthetic peptide located within the following region: MPVPPPAPPPPPTFALANTEKPSLNKTEQAGRNALLSDISKGKLLKKTV
Formulation:	Liquid. Purified antibody supplied in 1x PBS buffer with 0.09% (w/v) sodium azide and 2% sucrose. <i>Note that this product is shipped as lyophilized powder to China customers.</i>
Purification:	Affinity Purified
Conjugation:	Unconjugated
Storage:	Store at -20°C as received.
Stability:	Stable for 12 months from date of receipt.
Predicted Protein Size:	53 kDa
Gene Name:	Wolf-Hirschhorn syndrome candidate 1
Database Link:	NP_579877 Entrez Gene 680537 Rat O96028
Background:	Wipf1 binds the rat Wiskott-Aldrich syndrome protein homolog; may mediate mobilization of actin from stress fibers to form new actin filaments.
Synonyms:	MMSET; NSD2; REIIBP; TRX5; WHS
Note:	Immunogen Sequence Homology: Human: 100%; Mouse: 100%; Dog: 93%; Pig: 93%; Rat: 93%; Horse: 93%; Rabbit: 93%; Guinea pig: 93%; Bovine: 79%

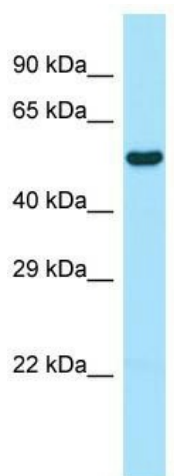


[View online »](#)

Protein Families: Druggable Genome, Transcription Factors

Protein Pathways: Lysine degradation

Product images:



WB Suggested Anti-Wipf1 Antibody; Titration: 1.0 ug/ml; Positive Control: Rat Small Intestine