

Product datasheet for **TA344229**

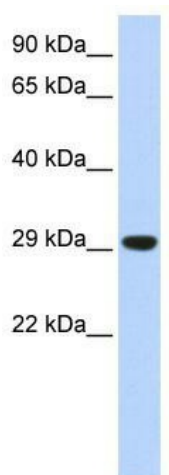
Tfam Rabbit Polyclonal Antibody

Product data:

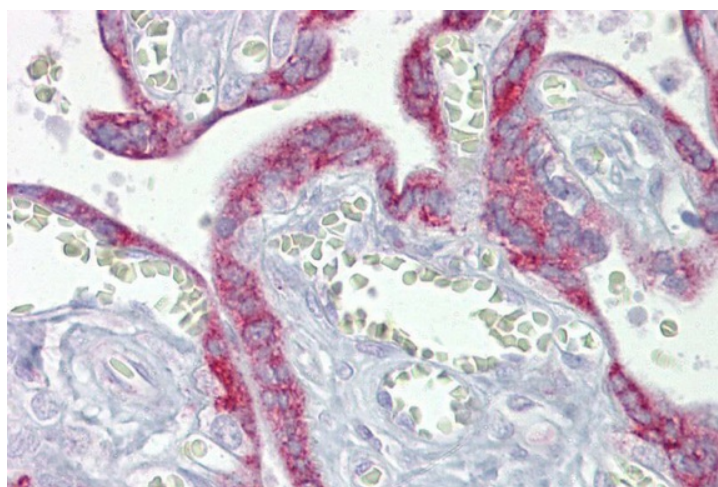
Product Type:	Primary Antibodies
Applications:	IHC, WB
Recommended Dilution:	WB, IHC
Reactivity:	Mouse, Human
Host:	Rabbit
Isotype:	IgG
Clonality:	Polyclonal
Immunogen:	The immunogen for anti-Tfam antibody: synthetic peptide corresponding to a region of Mouse. Synthetic peptide located within the following region: LGKPKRPRSAYNIYVSESFQEAKDDSAQGKCLKLVNEAWKNLSPEEKQAYI
Formulation:	Liquid. Purified antibody supplied in 1x PBS buffer with 0.09% (w/v) sodium azide and 2% sucrose. <i>Note that this product is shipped as lyophilized powder to China customers.</i>
Purification:	Affinity Purified
Conjugation:	Unconjugated
Storage:	Store at -20°C as received.
Stability:	Stable for 12 months from date of receipt.
Predicted Protein Size:	28 kDa
Gene Name:	transcription factor A, mitochondrial
Database Link:	NP_033386 Entrez Gene 7019 Human Entrez Gene 21780 Mouse P40630
Background:	The function remains unknown.
Synonyms:	MTTF1; MtTF1; MTTFA; mtTFA; OTTHUMP00000019633; TCF6; TCF6L1; TCF6L2; TCF6L3
Note:	Immunogen Sequence Homology: Mouse: 100%



[View online »](#)

Product images:

WB Suggested Anti-Tfam Antibody Titration: 0.2-1 ug/ml; ELISA Titer: 1:312500; Positive Control: Mouse Muscle



Immunohistochemistry with Placenta tissue at an antibody concentration of 5 ug/ml using anti-Tfam antibody