

Product datasheet for **TA344228**

MAGT1 Rabbit Polyclonal Antibody

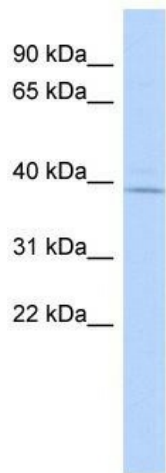
Product data:

Product Type:	Primary Antibodies
Applications:	WB
Recommended Dilution:	WB
Reactivity:	Human
Host:	Rabbit
Isotype:	IgG
Clonality:	Polyclonal
Immunogen:	The immunogen for anti-RP11-217H1.1 antibody: synthetic peptide directed towards the N terminal of human RP11-217H1.1. Synthetic peptide located within the following region: ARWRFWCVSVTMVALLIVCDVPSASAQRKKEMVLSEKVSQLEWTKRP
Formulation:	Liquid. Purified antibody supplied in 1x PBS buffer with 0.09% (w/v) sodium azide and 2% sucrose.
Purification:	Affinity Purified
Conjugation:	Unconjugated
Storage:	Store at -20°C as received.
Stability:	Stable for 12 months from date of receipt.
Predicted Protein Size:	41 kDa
Gene Name:	magnesium transporter 1
Database Link:	NP_115497 Entrez Gene 84061 Human Q9H0U3
Background:	The specific function of this protein remains unknown.
Synonyms:	bA217H1.1; IAP; MRX95; OST3B; PRO0756; XMEN
Note:	Immunogen Sequence Homology: Dog: 100%; Pig: 100%; Rat: 100%; Horse: 100%; Human: 100%; Mouse: 100%; Bovine: 100%; Guinea pig: 91%
Protein Families:	Druggable Genome, Transmembrane



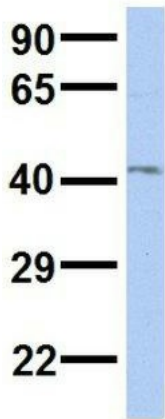
[View online »](#)

Product images:



WB Suggested Anti-RP11-217H1.1 Antibody
 Titration: 0.2-1 ug/ml; ELISA Titer: 1:1562500;
 Positive Control: Human brain

MAGT1



Rabbit Anti-MAGT1
 Sample Type: Human PANC1
 Antibody Concentration: 1ug/mL

Host: Rabbit; Target Name: MAGT1; Sample
 Tissue: PANC1; Antibody Dilution: 1.0 ug/ml;
 MAGT1 is supported by BioGPS gene expression
 data to be expressed in PANC1