

Product datasheet for **TA344227**

TXNDC4 (ERP44) Rabbit Polyclonal Antibody

Product data:

Product Type:	Primary Antibodies
Applications:	WB
Recommended Dilution:	WB
Reactivity:	Human
Host:	Rabbit
Isotype:	IgG
Clonality:	Polyclonal
Immunogen:	The immunogen for anti-TXNDC4 antibody: synthetic peptide directed towards the middle region of human TXNDC4. Synthetic peptide located within the following region: LHREFHHGPDPTDTAPGEQAQDVASSPPESSFQKLAPSEYRYTLLRDRDE
Formulation:	Liquid. Purified antibody supplied in 1x PBS buffer with 0.09% (w/v) sodium azide and 2% sucrose. <i>Note that this product is shipped as lyophilized powder to China customers.</i>
Purification:	Affinity Purified
Conjugation:	Unconjugated
Storage:	Store at -20°C as received.
Stability:	Stable for 12 months from date of receipt.
Predicted Protein Size:	45 kDa
Gene Name:	endoplasmic reticulum protein 44
Database Link:	NP_055866 Entrez Gene 23071 Human Q9BS26
Background:	TXNDC4 mediates thiol-dependent retention in the early secretory pathway, forming mixed disulfides with substrate proteins through its conserved CRFS motif. TXNDC4 inhibits the calcium channel activity of ITPR1. TXNDC4 may have a role in the control of oxidative protein folding in the endoplasmic reticulum. TXNDC4 is required to retain ERO1L and ERO1LB in the endoplasmic reticulum.
Synonyms:	PDIA10; TXNDC4

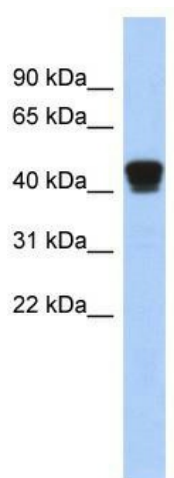


[View online »](#)

Note: Immunogen Sequence Homology: Pig: 100%; Rat: 100%; Human: 100%; Mouse: 100%; Guinea pig: 100%; Horse: 93%; Bovine: 93%; Rabbit: 93%; Dog: 86%; Zebrafish: 79%

Protein Families: Druggable Genome

Product images:



WB Suggested Anti-TXNDC4 Antibody Titration:
0.2-1 ug/ml; ELISA Titer: 1:312500; Positive
Control: Human Placenta