

Product datasheet for **TA344226**

Tumor protein D52 like 3 (TPD52L3) Rabbit Polyclonal Antibody

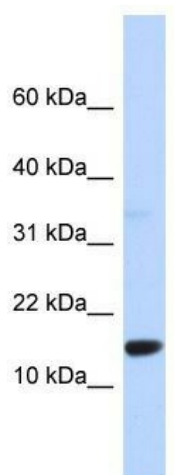
Product data:

Product Type:	Primary Antibodies
Applications:	WB
Recommended Dilution:	WB
Reactivity:	Human
Host:	Rabbit
Isotype:	IgG
Clonality:	Polyclonal
Immunogen:	The immunogen for anti-TPD52L3 antibody: synthetic peptide directed towards the middle region of human TPD52L3. Synthetic peptide located within the following region: GLRQNLSKSWLDVQVSNTYVKQKTSAAALSTMGTLICRKLGGVKKSATLRS
Formulation:	Liquid. Purified antibody supplied in 1x PBS buffer with 0.09% (w/v) sodium azide and 2% sucrose. <i>Note that this product is shipped as lyophilized powder to China customers.</i>
Purification:	Affinity Purified
Conjugation:	Unconjugated
Storage:	Store at -20°C as received.
Stability:	Stable for 12 months from date of receipt.
Predicted Protein Size:	15 kDa
Gene Name:	tumor protein D52-like 3
Database Link:	NP_001001874 Entrez Gene 89882 Human Q96J77
Background:	The exact functions of TPD52L3 remain unknown.
Synonyms:	hD55; NYDSP25
Note:	Immunogen Sequence Homology: Human: 93%; Dog: 79%; Horse: 79%; Rabbit: 79%
Protein Families:	Druggable Genome



[View online »](#)

Product images:



WB Suggested Anti-TPD52L3 Antibody Titration:
0.2-1 ug/ml; ELISA Titer: 1:1562500; Positive
Control: 293T cell lysate