

Product datasheet for TA344221

DPPA5 Rabbit Polyclonal Antibody

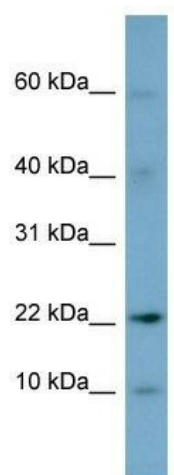
Product data:

Product Type:	Primary Antibodies
Applications:	WB
Recommended Dilution:	WB
Reactivity:	Human
Host:	Rabbit
Isotype:	IgG
Clonality:	Polyclonal
Immunogen:	The immunogen for anti-DPPA5 antibody: synthetic peptide directed towards the N terminal of human DPPA5. Synthetic peptide located within the following region: MGTLPARRHIPWVKVPEDLKDPEVFVQVQTRLLKAIFGPDGSRIPYIEQV
Formulation:	Liquid. Purified antibody supplied in 1x PBS buffer with 0.09% (w/v) sodium azide and 2% sucrose. <i>Note that this product is shipped as lyophilized powder to China customers.</i>
Purification:	Affinity Purified
Conjugation:	Unconjugated
Storage:	Store at -20°C as received.
Stability:	Stable for 12 months from date of receipt.
Predicted Protein Size:	13 kDa
Gene Name:	developmental pluripotency associated 5
Database Link:	NP_001020461 Entrez Gene 340168 Human A6NC42
Background:	DPPA5 is involved in the maintenance of embryonic stem (ES) cell pluripotency. DPPA5 is dispensable for self-renewal of pluripotent ES cells and establishment of germ cells. DPPA5 is associated with specific target mRNAs.
Synonyms:	ESG1
Note:	Immunogen Sequence Homology: Human: 100%; Mouse: 100%; Rabbit: 93%; Dog: 92%; Rat: 92%; Pig: 79%



[View online »](#)

Product images:



WB Suggested Anti-DPPA5 Antibody Titration: 0.2-1 ug/ml; ELISA Titer: 1:62500; Positive Control: PANC1 cell lysate