

Product datasheet for **TA344219**

TLX1NB Rabbit Polyclonal Antibody

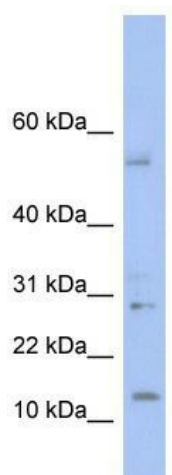
Product data:

Product Type:	Primary Antibodies
Applications:	WB
Recommended Dilution:	WB
Reactivity:	Human
Host:	Rabbit
Isotype:	IgG
Clonality:	Polyclonal
Immunogen:	The immunogen for anti-TD1 antibody: synthetic peptide directed towards the middle region of human TD1. Synthetic peptide located within the following region: PPHPLNKQKHPPHPSQTQKDLVPRSPQLEKSRIRLRRTLRLNLGGGGRGQR
Formulation:	Liquid. Purified antibody supplied in 1x PBS buffer with 0.09% (w/v) sodium azide and 2% sucrose.
Purification:	Affinity Purified
Conjugation:	Unconjugated
Storage:	Store at -20°C as received.
Stability:	Stable for 12 months from date of receipt.
Predicted Protein Size:	13 kDa
Gene Name:	TLX1 neighbor
Database Link:	NP_001078867 Entrez Gene 100038246 Human
Background:	The specific function of this protein remains unknown.
Synonyms:	APT-B7; TD1; TDI
Note:	Immunogen Sequence Homology: Human: 100%



[View online »](#)

Product images:



WB Suggested Anti-TD1 Antibody Titration: 0.2-1 ug/ml; ELISA Titer: 1:312500; Positive Control: Human Thymus