

Product datasheet for **TA344218**

Nardilysin (NRDC) Rabbit Polyclonal Antibody

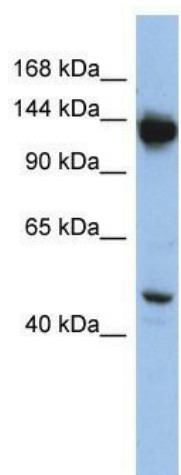
Product data:

Product Type:	Primary Antibodies
Applications:	WB
Recommended Dilution:	WB
Reactivity:	Human
Host:	Rabbit
Isotype:	IgG
Clonality:	Polyclonal
Immunogen:	The immunogen for anti-NRD1 antibody: synthetic peptide directed towards the middle region of human NRD1. Synthetic peptide located within the following region: GSKMLSVHVVGYGKYELEEDGTPSSEDSNSSCEVMQLTYLPTSPLLADCI
Formulation:	Liquid. Purified antibody supplied in 1x PBS buffer with 0.09% (w/v) sodium azide and 2% sucrose. <i>Note that this product is shipped as lyophilized powder to China customers.</i>
Purification:	Affinity Purified
Conjugation:	Unconjugated
Storage:	Store at -20°C as received.
Stability:	Stable for 12 months from date of receipt.
Predicted Protein Size:	132 kDa
Gene Name:	nardilysin convertase
Database Link:	NP_001095132 Entrez Gene 4898 Human O43847
Background:	NRD1 cleaves peptide substrates on the N-terminus of arginine residues in dibasic pairs.
Synonyms:	hNRD1; hNRD2; NRD1
Note:	Immunogen Sequence Homology: Human: 100%; Pig: 93%; Bovine: 93%; Horse: 86%
Protein Families:	Druggable Genome, Protease



[View online »](#)

Product images:



WB Suggested Anti-NRD1 Antibody Titration: 0.2-1 ug/ml; ELISA Titer: 1:62500; Positive Control: HepG2 cell lysate