

Product datasheet for **TA344217**

BMP6 Rabbit Polyclonal Antibody

Product data:

Product Type:	Primary Antibodies
Applications:	WB
Recommended Dilution:	WB
Reactivity:	Human
Host:	Rabbit
Isotype:	IgG
Clonality:	Polyclonal
Immunogen:	The immunogen for anti-BMP6 antibody: synthetic peptide directed towards the N terminal of human BMP6. Synthetic peptide located within the following region: DGGSPGRTEQPPSPQSSSGFLYRRLKTQEKREMQKEILSVLGLPHRPRP
Formulation:	Liquid. Purified antibody supplied in 1x PBS buffer with 0.09% (w/v) sodium azide and 2% sucrose. <i>Note that this product is shipped as lyophilized powder to China customers.</i>
Purification:	Affinity Purified
Conjugation:	Unconjugated
Storage:	Store at -20°C as received.
Stability:	Stable for 12 months from date of receipt.
Predicted Protein Size:	57 kDa
Gene Name:	bone morphogenetic protein 6
Database Link:	NP_001709 Entrez Gene 654 Human P22004



[View online »](#)

Background: The bone morphogenetic proteins (BMPs) are a family of secreted signaling molecules that can induce ectopic bone growth. Many BMPs are part of the transforming growth factor-beta (TGFB) superfamily. BMPs were originally identified by an ability of demineralized bone extract to induce endochondral osteogenesis in vivo in an extraskkeletal site. Based on its expression early in embryogenesis, the BMP encoded by this gene has a proposed role in early development. In addition, the fact that this BMP is closely related to BMP5 and BMP7 has lead to speculation of possible bone inductive activity.

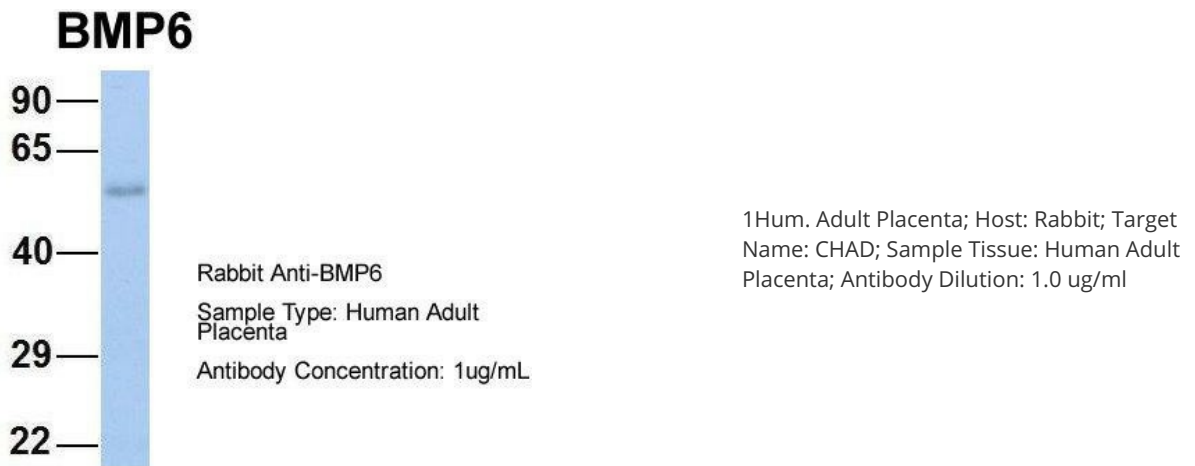
Synonyms: VGR; VGR1

Note: Immunogen Sequence Homology: Human: 100%; Pig: 85%; Rat: 83%; Mouse: 83%; Bovine: 77%

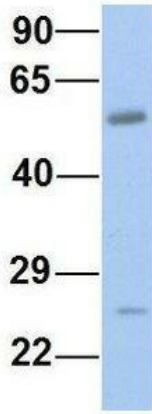
Protein Families: Adult stem cells, Cancer stem cells, Druggable Genome, Embryonic stem cells, ES Cell Differentiation/IPS, Induced pluripotent stem cells, Secreted Protein, Stem cell relevant signaling - TGFb/BMP signaling pathway

Protein Pathways: Hedgehog signaling pathway, TGF-beta signaling pathway

Product images:

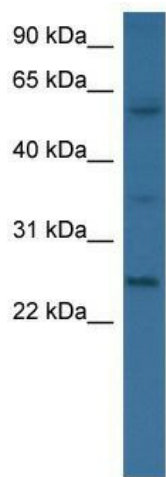


BMP6



Rabbit Anti-BMP6
Sample Type: Human Fetal
Muscle Antibody Concentration: 1

Host: Rabbit; Target Name: BMP6; Sample Tissue:
Human Fetal Muscle; Antibody Dilution: 1.0 ug/ml



WB Suggested Anti-BMP6 Antibody Titration: 0.2-
1 ug/ml; ELISA Titer: 1:62500; Positive Control:
721_B cell lysate BMP6 is strongly supported by
BioGPS gene expression data to be expressed in
Human 721_B cells