

Product datasheet for **TA344215**

GARS1 Rabbit Polyclonal Antibody

Product data:

Product Type:	Primary Antibodies
Applications:	WB
Recommended Dilution:	WB
Reactivity:	Human
Host:	Rabbit
Isotype:	IgG
Clonality:	Polyclonal
Immunogen:	The immunogen for anti-GARS antibody: synthetic peptide directed towards the middle region of human GARS. Synthetic peptide located within the following region: IEP SFGLGRIMYTVFEHTFHVREGDEQRFFSFPAVVAPFKCSVLPLSQN
Formulation:	Liquid. Purified antibody supplied in 1x PBS buffer with 0.09% (w/v) sodium azide and 2% sucrose. <i>Note that this product is shipped as lyophilized powder to China customers.</i>
Purification:	Affinity Purified
Conjugation:	Unconjugated
Storage:	Store at -20°C as received.
Stability:	Stable for 12 months from date of receipt.
Predicted Protein Size:	83 kDa
Gene Name:	glycyl-tRNA synthetase
Database Link:	NP_002038 Entrez Gene 2617 Human P41250



[View online »](#)

Background:

GARS catalyzes the attachment of glycine to tRNA(Gly). Is also able produce diadenosine tetraphosphate (Ap₄A), a universal pleiotropic signaling molecule needed for cell regulation pathways, by direct condensation of 2 ATPs. This gene encodes glycy-tRNA synthetase, one of the aminoacyl-tRNA synthetases that charge tRNAs with their cognate amino acids. The encoded enzyme is an (alpha)₂ dimer which belongs to the class II family of tRNA synthetases. It has been shown to be a target of autoantibodies in the human autoimmune diseases, polymyositis or dermatomyositis. Publication Note: This RefSeq record includes a subset of the publications that are available for this gene. Please see the Entrez Gene record to access additional publications.

Synonyms:

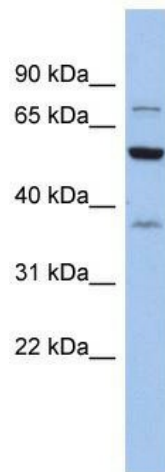
CMT2D; DSMAV; GlyRS; HMN5; SMAD1

Note:

Immunogen Sequence Homology: Dog: 100%; Pig: 100%; Rat: 100%; Horse: 100%; Human: 100%; Mouse: 100%; Rabbit: 100%; Guinea pig: 100%; Bovine: 93%; Zebrafish: 86%

Protein Pathways:

Aminoacyl-tRNA biosynthesis

Product images:

WB Suggested Anti-GARS Antibody Titration: 0.2-1 ug/ml; ELISA Titer: 1:62500; Positive Control: MCF7 cell lysate