

Product datasheet for **TA344214**

SHB Rabbit Polyclonal Antibody

Product data:

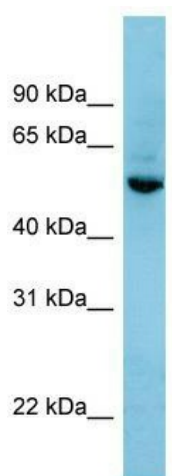
Product Type:	Primary Antibodies
Applications:	WB
Recommended Dilution:	WB
Reactivity:	Human
Host:	Rabbit
Isotype:	IgG
Clonality:	Polyclonal
Immunogen:	The immunogen for anti-SHB antibody: synthetic peptide directed towards the N terminal of human SHB. Synthetic peptide located within the following region: MAKWLNKYFSLGNSKTKSPPQPPRPDYREQRRRGERPSQPPQAVPQASSA
Formulation:	Liquid. Purified antibody supplied in 1x PBS buffer with 0.09% (w/v) sodium azide and 2% sucrose. <i>Note that this product is shipped as lyophilized powder to China customers.</i>
Purification:	Affinity Purified
Conjugation:	Unconjugated
Storage:	Store at -20°C as received.
Stability:	Stable for 12 months from date of receipt.
Predicted Protein Size:	55 kDa
Gene Name:	SH2 domain containing adaptor protein B
Database Link:	NP_003019 Entrez Gene 6461 Human Q15464
Background:	SHB is the adapter protein which regulates several signal transduction cascades by linking activated receptors to downstream signaling components. SHB may play a role in angiogenesis by regulating FGFR1, VEGFR2 and PDGFR signaling. SHB may also play a role
Synonyms:	bA3J10.2
Note:	Immunogen Sequence Homology: Dog: 100%; Rat: 100%; Human: 100%; Mouse: 100%; Bovine: 100%; Rabbit: 100%; Zebrafish: 82%



[View online »](#)

Protein Families: ES Cell Differentiation/IPS

Product images:



WB Suggested Anti-SHB Antibody Titration: 0.2-1 ug/ml; ELISA Titer: 1:312500; Positive Control: HepG2 cell lysate SHB is supported by BioGPS gene expression data to be expressed in HepG2