

## Product datasheet for **TA344213**

### SHB Rabbit Polyclonal Antibody

#### Product data:

Product Type:	Primary Antibodies
Applications:	WB
Recommended Dilution:	WB
Reactivity:	Human
Host:	Rabbit
Isotype:	IgG
Clonality:	Polyclonal
Immunogen:	The immunogen for anti-SHB antibody: synthetic peptide directed towards the N terminal of human SHB. Synthetic peptide located within the following region: ERPSQPPQAVPQASSAASASCGPATASCFSASSGSLPDDSGSTSDLIRAY
Formulation:	Liquid. Purified antibody supplied in 1x PBS buffer with 0.09% (w/v) sodium azide and 2% sucrose. <i>Note that this product is shipped as lyophilized powder to China customers.</i>
Purification:	Affinity Purified
Conjugation:	Unconjugated
Storage:	Store at -20°C as received.
Stability:	Stable for 12 months from date of receipt.
Predicted Protein Size:	55 kDa
Gene Name:	SH2 domain containing adaptor protein B
Database Link:	<a href="#">NP_003019</a> <a href="#">Entrez Gene 6461 Human</a> <a href="#">Q15464</a>
Background:	SHB is the adapter protein which regulates several signal transduction cascades by linking activated receptors to downstream signaling components. SHB may play a role in angiogenesis by regulating FGFR1, VEGFR2 and PDGFR signaling. SHB may also play a role in T-cell antigen receptor/TCR signaling, interleukin-2 signaling, apoptosis and neuronal cells differentiation by mediating basic-FGF and NGF-induced signaling cascades. SHB may also regulate IRS1 and IRS2 signaling in insulin-producing cells.



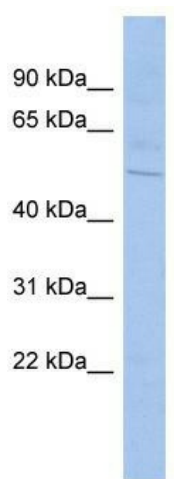
[View online »](#)

**Synonyms:** bA3J10.2

**Note:** Immunogen Sequence Homology: Rat: 100%; Human: 100%; Mouse: 100%; Bovine: 100%; Rabbit: 100%; Dog: 93%

**Protein Families:** ES Cell Differentiation/IPS

**Product images:**



WB Suggested Anti-SHB Antibody Titration: 0.2-1 ug/ml; ELISA Titer: 1:1562500; Positive Control: HepG2 cell lysate. SHB is supported by BioGPS gene expression data to be expressed in HepG2