

Product datasheet for TA344212

SLIT1 Rabbit Polyclonal Antibody

Product data:

Product Type:	Primary Antibodies
Applications:	IHC, WB
Recommended Dilution:	WB, IHC
Reactivity:	Human, Mouse
Host:	Rabbit
Isotype:	IgG
Clonality:	Polyclonal
Immunogen:	The immunogen for anti-SLIT1 antibody: synthetic peptide directed towards the middle region of human SLIT1. Synthetic peptide located within the following region: GAHCVCDPGFSGELCEQESECRGDPVRDFHQVQRGYAICQTTRPLSWVEC
Formulation:	Liquid. Purified antibody supplied in 1x PBS buffer with 0.09% (w/v) sodium azide and 2% sucrose. <i>Note that this product is shipped as lyophilized powder to China customers.</i>
Purification:	Affinity Purified
Conjugation:	Unconjugated
Storage:	Store at -20°C as received.
Stability:	Stable for 12 months from date of receipt.
Predicted Protein Size:	168 kDa
Gene Name:	slit guidance ligand 1
Database Link:	NP_003052 Entrez Gene 20562 Mouse Entrez Gene 6585 Human O75093
Background:	SLIT1 is thought to act as molecular guidance cue in cellular migration, and function appears to be mediated by interaction with roundabout homolog receptors. During neural development involved in axonal navigation at the ventral midline of the neural tub
Synonyms:	MEGF4; SLIL1; SLIT-1; SLIT3
Note:	Immunogen Sequence Homology: Dog: 100%; Pig: 100%; Horse: 100%; Human: 100%; Bovine: 100%; Rabbit: 100%; Rat: 93%; Mouse: 93%; Guinea pig: 93%; Zebrafish: 86%

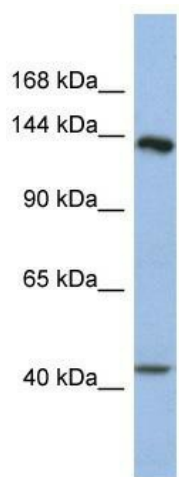


[View online »](#)

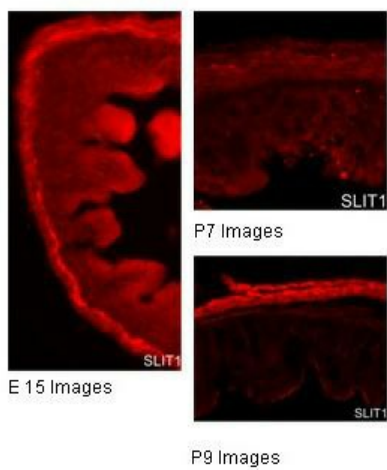
Protein Families: Druggable Genome

Protein Pathways: Axon guidance

Product images:



WB Suggested Anti-SLIT1 Antibody Titration: 0.2-1 ug/ml; ELISA Titer: 1:62500; Positive Control: Human Stomach



Immunohistochemistry with SLIT1 GFP/ WT mice tissue at an antibody concentration of 2.5 ug/ml using anti-SLIT1 antibody