

## Product datasheet for **TA344211**

### SLIT3 Rabbit Polyclonal Antibody

#### Product data:

Product Type:	Primary Antibodies
Applications:	WB
Recommended Dilution:	WB
Reactivity:	Human, Mouse
Host:	Rabbit
Isotype:	IgG
Clonality:	Polyclonal
Immunogen:	The immunogen for anti-SLIT3 antibody: synthetic peptide directed towards the N terminal of human SLIT3. Synthetic peptide located within the following region: PRRLANKRISQIKSKKFRCSGSEDIYRSRFSSECFMDLVCPEKCRCEGTIV
Formulation:	Liquid. Purified antibody supplied in 1x PBS buffer with 0.09% (w/v) sodium azide and 2% sucrose. <i>Note that this product is shipped as lyophilized powder to China customers.</i>
Purification:	Affinity Purified
Conjugation:	Unconjugated
Storage:	Store at -20°C as received.
Stability:	Stable for 12 months from date of receipt.
Predicted Protein Size:	168 kDa
Gene Name:	slit guidance ligand 3
Database Link:	<a href="#">NP_003053</a> <a href="#">Entrez Gene 20564 Mouse</a> <a href="#">Entrez Gene 6586 Human</a> <a href="#">O75094</a>
Background:	SLIT3 may act as molecular guidance cue in cellular migration, and function may be mediated by interaction with roundabout homolog receptors.
Synonyms:	MEGF5; SLIL2; Slit-3; SLIT1; slit2
Note:	Immunogen Sequence Homology: Dog: 100%; Horse: 100%; Human: 100%; Bovine: 100%; Pig: 93%; Rat: 93%; Mouse: 93%; Rabbit: 93%; Guinea pig: 93%

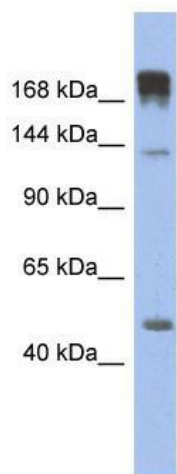


[View online »](#)

Protein Families: Druggable Genome, Secreted Protein

Protein Pathways: Axon guidance

### Product images:



WB Suggested Anti-SLIT3 Antibody Titration: 0.2-1 ug/ml; ELISA Titer: 1:62500; Positive Control: Human Muscle