

## Product datasheet for **TA344210**

### **KRT75 Rabbit Polyclonal Antibody**

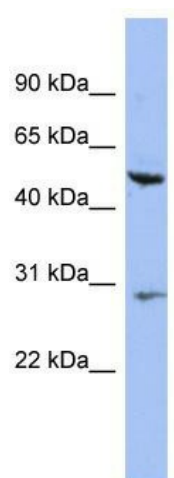
#### **Product data:**

<b>Product Type:</b>	Primary Antibodies
<b>Applications:</b>	WB
<b>Recommended Dilution:</b>	WB
<b>Reactivity:</b>	Human
<b>Host:</b>	Rabbit
<b>Isotype:</b>	IgG
<b>Clonality:</b>	Polyclonal
<b>Immunogen:</b>	The immunogen for anti-KRT75 antibody: synthetic peptide directed towards the N terminal of human KRT75. Synthetic peptide located within the following region: MSRQSSITFQSGSRRGFSTTSAITPAAGRSRFSSVSVARSAAGSGGLGRI
<b>Formulation:</b>	Liquid. Purified antibody supplied in 1x PBS buffer with 0.09% (w/v) sodium azide and 2% sucrose. <i>Note that this product is shipped as lyophilized powder to China customers.</i>
<b>Purification:</b>	Affinity Purified
<b>Conjugation:</b>	Unconjugated
<b>Storage:</b>	Store at -20°C as received.
<b>Stability:</b>	Stable for 12 months from date of receipt.
<b>Predicted Protein Size:</b>	59 kDa
<b>Gene Name:</b>	keratin 75
<b>Database Link:</b>	<a href="#">NP_004684</a> <a href="#">Entrez Gene 9119 Human</a> <a href="#">O95678</a>
<b>Background:</b>	This gene is a member of the type II keratin family clustered on the long arm of chromosome 12. Type I and type II keratins heteropolymerize to form intermediate-sized filaments in the cytoplasm of epithelial cells. This gene is expressed in the companion
<b>Synonyms:</b>	K6HF; KB18; PFB
<b>Note:</b>	Immunogen Sequence Homology: Human: 100%; Rat: 93%; Mouse: 86%; Pig: 85%; Bovine: 79%; Rabbit: 79%



[View online »](#)

## Product images:



WB Suggested Anti-KRT75 Antibody Titration: 0.2-1 ug/ml; ELISA Titer: 1:312500; Positive Control: HT1080 cell lysate