

## Product datasheet for **TA344209**

### KRT75 Rabbit Polyclonal Antibody

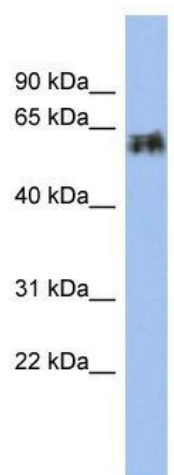
#### Product data:

Product Type:	Primary Antibodies
Applications:	WB
Recommended Dilution:	WB
Reactivity:	Human
Host:	Rabbit
Isotype:	IgG
Clonality:	Polyclonal
Immunogen:	The immunogen for anti-KRT75 antibody: synthetic peptide directed towards the middle region of human KRT75. Synthetic peptide located within the following region: SFTTSGGHSLGAGLGGSGFSATSNRGLGGSSVKFVSTTSSSQKSYTH
Formulation:	Liquid. Purified antibody supplied in 1x PBS buffer with 0.09% (w/v) sodium azide and 2% sucrose. <i>Note that this product is shipped as lyophilized powder to China customers.</i>
Purification:	Affinity Purified
Conjugation:	Unconjugated
Storage:	Store at -20°C as received.
Stability:	Stable for 12 months from date of receipt.
Predicted Protein Size:	59 kDa
Gene Name:	keratin 75
Database Link:	<a href="#">NP_004684</a> <a href="#">Entrez Gene 9119 Human</a> <a href="#">O95678</a>
Background:	This gene is a member of the type II keratin family clustered on the long arm of chromosome 12. Type I and type II keratins heteropolymerize to form intermediate-sized filaments in the cytoplasm of epithelial cells. This gene is expressed in the companion
Synonyms:	K6HF; KB18; PFB
Note:	Immunogen Sequence Homology: Human: 100%; Rabbit: 86%; Dog: 79%



[View online »](#)

## Product images:



WB Suggested Anti-KRT75 Antibody Titration: 0.2-1 ug/ml; ELISA Titer: 1:1562500; Positive Control: Human Small Intestine