

## Product datasheet for **TA344206**

### PDCD7 Rabbit Polyclonal Antibody

#### Product data:

Product Type:	Primary Antibodies
Applications:	WB
Recommended Dilution:	WB
Reactivity:	Human
Host:	Rabbit
Isotype:	IgG
Clonality:	Polyclonal
Immunogen:	The immunogen for anti-PDCD7 antibody: synthetic peptide directed towards the N terminal of human PDCD7. Synthetic peptide located within the following region: MALPPFFGQGRPGPPPPQPPPPAPFGCPPPLPSPAFPPPLPQRPGPFPG
Formulation:	Liquid. Purified antibody supplied in 1x PBS buffer with 0.09% (w/v) sodium azide and 2% sucrose.
Purification:	Affinity Purified
Conjugation:	Unconjugated
Storage:	Store at -20°C as received.
Stability:	Stable for 12 months from date of receipt.
Predicted Protein Size:	55 kDa
Gene Name:	programmed cell death 7
Database Link:	<a href="#">NP_005698</a> <a href="#">Entrez Gene 10081 Human</a> <a href="#">Q8N8D1</a>



[View online »](#)

**Background:**

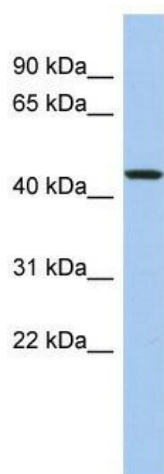
PDCD7 is a protein with sequence similarity to a mouse protein originally identified in embryonic stem cells. In mouse T-cell lines, this protein appears to be related to glucocorticoid- and staurine-induced apoptotic pathways, and to be linked to ceramide-mediated signalling. These observations suggest that this gene product is involved in specific apoptotic processes in T-cells. This gene encodes a protein with sequence similarity to a mouse protein originally identified in embryonic stem cells. In mouse T-cell lines, this protein appears to be related to glucocorticoid- and staurine-induced apoptotic pathways, and to be linked to ceramide-mediated signalling. These observations suggest that this gene product is involved in specific apoptotic processes in T-cells.

**Synonyms:**

ES18; HES18

**Note:**

Immunogen Sequence Homology: Pig: 100%; Human: 100%; Mouse: 100%; Bovine: 93%; Horse: 82%

**Product images:**


WB Suggested Anti-PDCD7 Antibody Titration:  
0.2-1 ug/ml; ELISA Titer: 1:312500; Positive  
Control: MCF7 cell lysate