

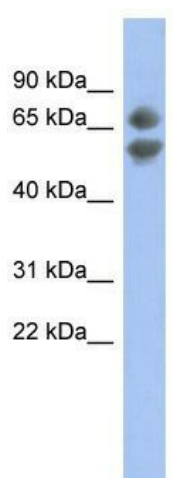
Product datasheet for TA344205

PDCD7 Rabbit Polyclonal Antibody

Product data:

Product Type:	Primary Antibodies
Applications:	WB
Recommended Dilution:	WB
Reactivity:	Human
Host:	Rabbit
Isotype:	IgG
Clonality:	Polyclonal
Immunogen:	The immunogen for anti-PDCD7 antibody: synthetic peptide directed towards the middle region of human PDCD7. Synthetic peptide located within the following region: YLQAEHSLPALIQIRHDWDQYLVPSPDHPKGNFVPQGWVLPPLPSNDIWAT
Formulation:	Liquid. Purified antibody supplied in 1x PBS buffer with 0.09% (w/v) sodium azide and 2% sucrose.
Purification:	Affinity Purified
Conjugation:	Unconjugated
Storage:	Store at -20°C as received.
Stability:	Stable for 12 months from date of receipt.
Predicted Protein Size:	55 kDa
Gene Name:	programmed cell death 7
Database Link:	NP_005698 Entrez Gene 10081 Human Q8N8D1
Background:	PDCD7 is a protein with sequence similarity to a mouse protein originally identified in embryonic stem cells. In mouse T-cell lines, this protein appears to be related to glucocorticoid- and staurosporine-induced apoptotic pathways, and to be linked to ceramid
Synonyms:	ES18; HES18
Note:	Immunogen Sequence Homology: Dog: 100%; Pig: 100%; Rat: 100%; Horse: 100%; Human: 100%; Mouse: 100%; Bovine: 100%; Rabbit: 100%; Guinea pig: 92%


[View online »](#)

Product images:

WB Suggested Anti-PDCD7 Antibody Titration:
0.2-1 ug/ml; ELISA Titer: 1:62500; Positive Control:
NCI-H226 cell lysate