

Product datasheet for **TA344203**

SIM1 Rabbit Polyclonal Antibody

Product data:

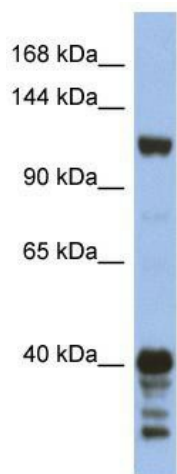
Product Type:	Primary Antibodies
Applications:	WB
Recommended Dilution:	WB
Reactivity:	Human
Host:	Rabbit
Isotype:	IgG
Clonality:	Polyclonal
Immunogen:	The immunogen for anti-SIPA1 antibody: synthetic peptide directed towards the middle region of human SIPA1. Synthetic peptide located within the following region: TAKPSVPSADSETPLTQDRPGSPSGSEDKGNPAPELRASFLPRTLRLNS
Formulation:	Liquid. Purified antibody supplied in 1x PBS buffer with 0.09% (w/v) sodium azide and 2% sucrose. <i>Note that this product is shipped as lyophilized powder to China customers.</i>
Purification:	Affinity Purified
Conjugation:	Unconjugated
Storage:	Store at -20°C as received.
Stability:	Stable for 12 months from date of receipt.
Predicted Protein Size:	112 kDa
Gene Name:	single-minded family bHLH transcription factor 1
Database Link:	NP_005059 Entrez Gene 6492 Human P81133
Background:	The product of this gene is a mitogen induced GTPase activating protein (GAP). It exhibits a specific GAP activity for Ras-related regulatory proteins Rap1 and Rap2, but not for Ran or other small GTPases. This protein may also hamper mitogen-induced cell
Synonyms:	bHLHe14
Note:	Immunogen Sequence Homology: Human: 100%



[View online »](#)

Protein Families: Druggable Genome, Transcription Factors

Product images:



WB Suggested Anti-SIPA1 Antibody Titration: 0.2-1 ug/ml; ELISA Titer: 1:62500; Positive Control: HT1080 cell lysate