

Product datasheet for **TA344202**

PDAP1 Rabbit Polyclonal Antibody

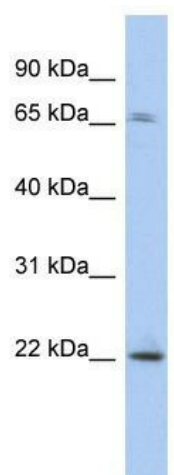
Product data:

Product Type:	Primary Antibodies
Applications:	WB
Recommended Dilution:	WB
Reactivity:	Human
Host:	Rabbit
Isotype:	IgG
Clonality:	Polyclonal
Immunogen:	The immunogen for anti-PDAP1 antibody: synthetic peptide directed towards the N terminal of human PDAP1. Synthetic peptide located within the following region: MPKGGGRKGGHKGRARQYTSPEEIDAQLQAEKQKAREEEEEQKEGGDGAAGD
Formulation:	Liquid. Purified antibody supplied in 1x PBS buffer with 0.09% (w/v) sodium azide and 2% sucrose. <i>Note that this product is shipped as lyophilized powder to China customers.</i>
Purification:	Affinity Purified
Conjugation:	Unconjugated
Storage:	Store at -20°C as received.
Stability:	Stable for 12 months from date of receipt.
Predicted Protein Size:	20 kDa
Gene Name:	PDGFA associated protein 1
Database Link:	NP_055706 Entrez Gene 11333 Human Q13442
Background:	PDAP1 enhances PDGFA-stimulated cell growth in fibroblasts, but inhibits the mitogenic effect of PDGFB.
Synonyms:	HASPP28; PAP; PAP1
Note:	Immunogen Sequence Homology: Dog: 100%; Pig: 100%; Horse: 100%; Human: 100%; Bovine: 100%; Rabbit: 100%; Guinea pig: 100%; Rat: 93%; Mouse: 93%; Zebrafish: 86%



[View online »](#)

Product images:



WB Suggested Anti-PDAP1 Antibody Titration: 0.2-1 ug/ml; ELISA Titer: 1:1562500; Positive Control: HeLa cell lysate