

## Product datasheet for **TA344200**

### Argonaute 4 (AGO4) Rabbit Polyclonal Antibody

#### Product data:

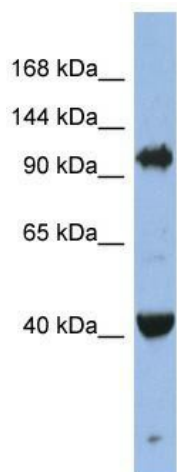
Product Type:	Primary Antibodies
Applications:	WB
Recommended Dilution:	WB
Reactivity:	Human
Host:	Rabbit
Isotype:	IgG
Clonality:	Polyclonal
Immunogen:	The immunogen for anti-EIF2C4 antibody: synthetic peptide directed towards the middle region of human EIF2C4. Synthetic peptide located within the following region: DGHPSTRYCATVRVQTSRQEISQELLYSQEVIQDLTNMVRRELLIQFYKSTR
Formulation:	Liquid. Purified antibody supplied in 1x PBS buffer with 0.09% (w/v) sodium azide and 2% sucrose.
Purification:	Affinity Purified
Conjugation:	Unconjugated
Storage:	Store at -20°C as received.
Stability:	Stable for 12 months from date of receipt.
Predicted Protein Size:	95 kDa
Gene Name:	argonaute 4, RISC catalytic component
Database Link:	<a href="#">NP_060099</a> <a href="#">Entrez Gene 192670 Human</a> <a href="#">Q9HCK5</a>
Background:	This gene encodes a member of the Argonaute family of proteins which play a role in RNA interference. The encoded protein is highly basic containing PAZ and PIWI domains, and it may play a role in short-interfering-RNA-mediated gene silencing. This gene i
Synonyms:	EIF2C4
Note:	Immunogen Sequence Homology: Dog: 100%; Pig: 100%; Rat: 100%; Human: 100%; Rabbit: 100%; Guinea pig: 100%; Mouse: 93%



[View online »](#)

Protein Families: Druggable Genome

### Product images:



WB Suggested Anti-EIF2C4 Antibody Titration: 0.2-1 ug/ml; ELISA Titer: 1:62500; Positive Control: Jurkat cell lysate