

Product datasheet for **TA344199**

GNL3L Rabbit Polyclonal Antibody

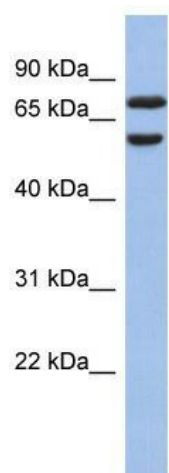
Product data:

| | |
|--------------------------------|--|
| Product Type: | Primary Antibodies |
| Applications: | IHC, WB |
| Recommended Dilution: | WB |
| Reactivity: | Human |
| Host: | Rabbit |
| Isotype: | IgG |
| Clonality: | Polyclonal |
| Immunogen: | The immunogen for anti-GNL3L antibody: synthetic peptide directed towards the N terminal of human GNL3L. Synthetic peptide located within the following region: MMKLRHKNKKPGEGSKGHKKISWPYPQPAKQNGKKATSKVPSAPHFVHPN |
| Formulation: | Liquid. Purified antibody supplied in 1x PBS buffer with 0.09% (w/v) sodium azide and 2% sucrose. <i>Note that this product is shipped as lyophilized powder to China customers.</i> |
| Purification: | Affinity Purified |
| Conjugation: | Unconjugated |
| Storage: | Store at -20°C as received. |
| Stability: | Stable for 12 months from date of receipt. |
| Predicted Protein Size: | 65 kDa |
| Gene Name: | G protein nucleolar 3 like |
| Database Link: | NP_061940 Entrez Gene 54552 Human Q9NVN8 |
| Background: | GNL3L is required for normal processing of ribosomal pre-rRNA and cell proliferation. |
| Synonyms: | GNL3B |
| Note: | Immunogen Sequence Homology: Human: 100%; Dog: 86%; Pig: 86%; Rat: 86%; Mouse: 86%; Bovine: 86%; Rabbit: 86% |
| Protein Families: | Protease |

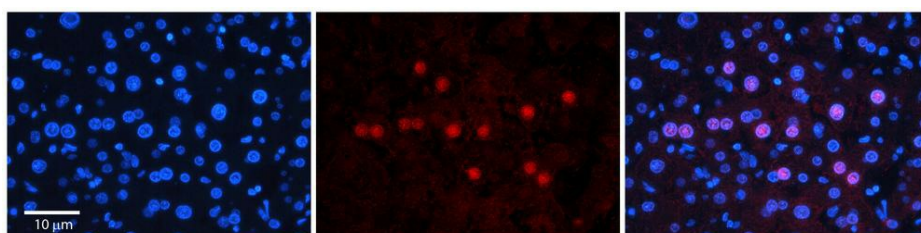


[View online »](#)

Product images:



WB Suggested Anti-GNL3L Antibody Titration: 0.2-1 ug/ml; ELISA Titer: 1:62500; Positive Control: Human Lung



Rabbit Anti-GNL3L Antibody; Formalin Fixed Paraffin Embedded Tissue: Human Adult Liver; Observed Staining: Nuclear in hepatocytes, moderate signal, low tissue distribution; Primary Antibody Concentration: 1:100; Secondary Antibody: Donkey anti-Rabbit-Cy3;