

Product datasheet for **TA344198**

GNL3L Rabbit Polyclonal Antibody

Product data:

Product Type:	Primary Antibodies
Applications:	IF, WB
Recommended Dilution:	WB, IF
Reactivity:	Human
Host:	Rabbit
Isotype:	IgG
Clonality:	Polyclonal
Immunogen:	The immunogen for anti-GNL3L antibody: synthetic peptide directed towards the N terminal of human GNL3L. Synthetic peptide located within the following region: QQAAREQERQKRRTIESYCDVLRQEEFEHKEEVLQELNMFQQLDDEAT
Formulation:	Liquid. Purified antibody supplied in 1x PBS buffer with 0.09% (w/v) sodium azide and 2% sucrose. <i>Note that this product is shipped as lyophilized powder to China customers.</i>
Purification:	Affinity Purified
Conjugation:	Unconjugated
Storage:	Store at -20°C as received.
Stability:	Stable for 12 months from date of receipt.
Predicted Protein Size:	65 kDa
Gene Name:	G protein nucleolar 3 like
Database Link:	NP_061940 Entrez Gene 54552 Human Q9NVN8
Background:	GNL3L is required for normal processing of ribosomal pre-rRNA and cell proliferation.
Synonyms:	GNL3B
Note:	Immunogen Sequence Homology: Human: 100%; Bovine: 100%; Pig: 93%; Horse: 93%; Dog: 86%; Rat: 86%; Rabbit: 86%; Guinea pig: 86%; Mouse: 79%
Protein Families:	Protease

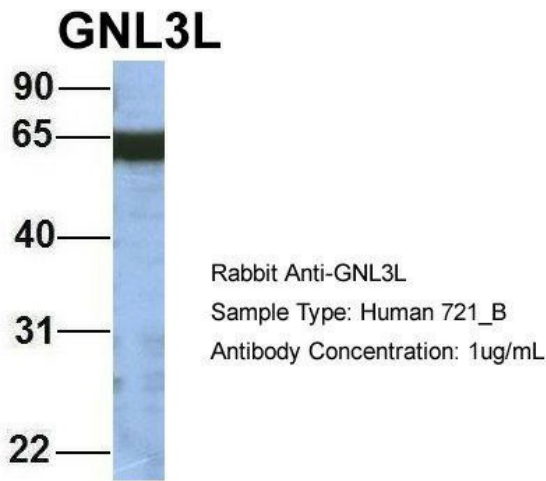


[View online »](#)

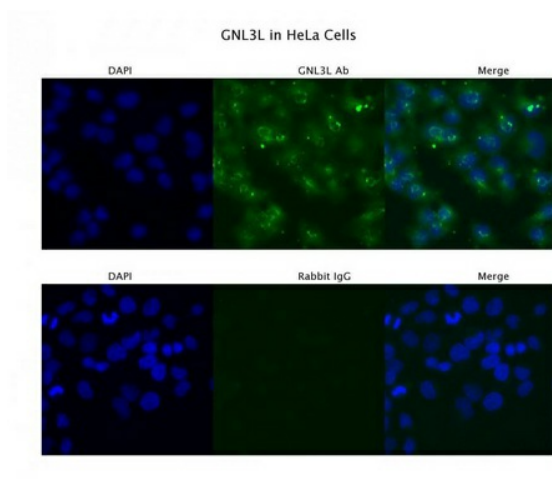
Product images:



WB Suggested Anti-GNL3L Antibody Titration: 0.2-1 ug/ml; ELISA Titer: 1:62500; Positive Control: Human Lung



Host: Rabbit; Target Name: GNL3L; Sample Tissue: 721_B; Antibody Dilution: 1.0 ug/ml; GNL3L is strongly supported by BioGPS gene expression data to be expressed in Human 721_B cells



Sample Type : HeLa; Primary Antibody Dilution: 4 ug/ml; Secondary Antibody : Anti-rabbit Alexa 546; Secondary Antibody Dilution: 2 ug/ml; Gene Name : GNL3L