

Product datasheet for **TA344197**

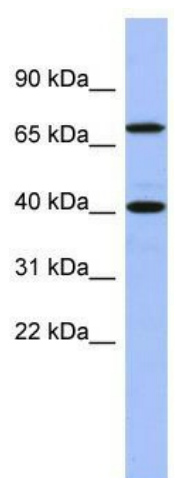
SLAIN2 Rabbit Polyclonal Antibody

Product data:

Product Type:	Primary Antibodies
Applications:	WB
Recommended Dilution:	WB
Reactivity:	Human
Host:	Rabbit
Isotype:	IgG
Clonality:	Polyclonal
Immunogen:	The immunogen for anti-SLAIN2 antibody: synthetic peptide directed towards the N terminal of human SLAIN2. Synthetic peptide located within the following region: LSAKSGGGPGSGPRRTSSEELRDATSLLAAGEGLLDEVEPLRPDELERL
Formulation:	Liquid. Purified antibody supplied in 1x PBS buffer with 0.09% (w/v) sodium azide and 2% sucrose.
Purification:	Affinity Purified
Conjugation:	Unconjugated
Storage:	Store at -20°C as received.
Stability:	Stable for 12 months from date of receipt.
Predicted Protein Size:	62 kDa
Gene Name:	SLAIN motif family member 2
Database Link:	NP_065897 Entrez Gene 57606 Human Q9P270
Background:	The function of the SLAIN2 gene has not yet been determined.
Synonyms:	KIAA1458
Note:	Immunogen Sequence Homology: Human: 100%; Bovine: 92%; Rabbit: 92%; Pig: 86%; Rat: 86%; Mouse: 86%; Guinea pig: 86%



[View online »](#)

Product images:

WB Suggested Anti-SLAIN2 Antibody Titration:
0.2-1 ug/ml; ELISA Titer: 1:312500; Positive
Control: Human Thymus