

Product datasheet for **TA344196**

Slap (SLA) Rabbit Polyclonal Antibody

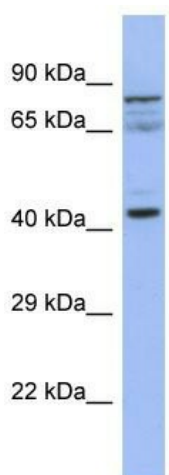
Product data:

Product Type:	Primary Antibodies
Applications:	WB
Recommended Dilution:	WB
Reactivity:	Human
Host:	Rabbit
Isotype:	IgG
Clonality:	Polyclonal
Immunogen:	The immunogen for Anti-SLAIN2 antibody is: synthetic peptide directed towards the C-terminal region of Human SLAIN2. Synthetic peptide located within the following region: VPSPGKFRSPAAPSPLALRQPVKAFSNHGSGSPGSQEITQLTQTSSPGP
Formulation:	Liquid. Purified antibody supplied in 1x PBS buffer with 0.09% (w/v) sodium azide and 2% sucrose. <i>Note that this product is shipped as lyophilized powder to China customers.</i>
Purification:	Affinity Purified
Conjugation:	Unconjugated
Storage:	Store at -20°C as received.
Stability:	Stable for 12 months from date of receipt.
Predicted Protein Size:	45 kDa
Gene Name:	Src-like-adaptor
Database Link:	NP_001039022 Entrez Gene 6503 Human Q13239
Background:	The function of this protein remains unknown.
Synonyms:	SLA1; SLAP
Note:	Immunogen Sequence Homology: Human: 100%; Rat: 93%; Horse: 93%; Bovine: 93%; Rabbit: 93%; Dog: 86%; Mouse: 86%; Pig: 79%; Guinea pig: 79%
Protein Families:	Druggable Genome



[View online »](#)

Product images:



Host: Rabbit

Target Name: SLAIN2

Sample Tissue: HepG2 Cell Lysate

Antibody Dilution: 1.0 μ g/ml

Host: Rabbit; Target Name: SLAIN2; Sample Tissue: HepG2 Whole cell lysates; Antibody Dilution: 1.0 μ g/ml