

## Product datasheet for TA344194

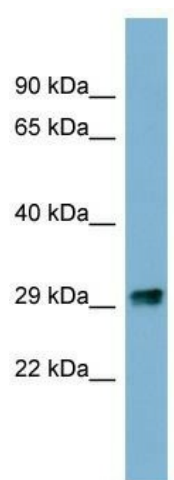
### PRKRIP1 Rabbit Polyclonal Antibody

#### Product data:

Product Type:	Primary Antibodies
Applications:	WB
Recommended Dilution:	WB
Reactivity:	Human
Host:	Rabbit
Isotype:	IgG
Clonality:	Polyclonal
Immunogen:	The immunogen for anti-PRKRIP1 antibody: synthetic peptide directed towards the N terminal of human PRKRIP1. Synthetic peptide located within the following region: MASPAASSVRPPRPKKEPQTLVIPKNAAEEQKLKLERLMKNPDKAVPIPE
Formulation:	Liquid. Purified antibody supplied in 1x PBS buffer with 0.09% (w/v) sodium azide and 2% sucrose.
Purification:	Affinity Purified
Conjugation:	Unconjugated
Storage:	Store at -20°C as received.
Stability:	Stable for 12 months from date of receipt.
Predicted Protein Size:	21 kDa
Gene Name:	PRKR interacting protein 1 (IL11 inducible)
Database Link:	<a href="#">NP_078929</a> <a href="#">Entrez Gene 79706 Human</a> <a href="#">Q9H875</a>
Background:	PRKRIP1 binds double-stranded RNA. It inhibits EIF2AK2 kinase activity.
Synonyms:	C114; KRBOX3
Note:	Immunogen Sequence Homology: Dog: 100%; Pig: 100%; Rat: 100%; Horse: 100%; Human: 100%; Mouse: 100%; Bovine: 100%; Rabbit: 100%; Guinea pig: 86%


[View online »](#)

## Product images:



WB Suggested Anti-PRKRIP1 Antibody Titration:  
0.2-1 ug/ml; ELISA Titer: 1:1562500; Positive  
Control: COLO205 cell lysate