

Product datasheet for **TA344193**

AGO3 Rabbit Polyclonal Antibody

Product data:

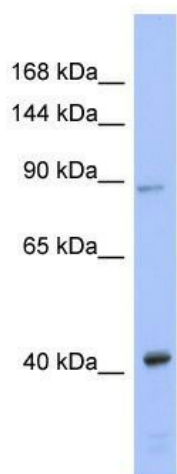
Product Type:	Primary Antibodies
Applications:	WB
Recommended Dilution:	WB
Reactivity:	Human
Host:	Rabbit
Isotype:	IgG
Clonality:	Polyclonal
Immunogen:	The immunogen for anti-EIF2C3 antibody: synthetic peptide directed towards the N terminal of human EIF2C3. Synthetic peptide located within the following region: MCEVLDIHNIDEQPRPLTDSHRVKFTKEIKGLKVEVTHCGTMRRKYRVCN
Formulation:	Liquid. Purified antibody supplied in 1x PBS buffer with 0.09% (w/v) sodium azide and 2% sucrose. <i>Note that this product is shipped as lyophilized powder to China customers.</i>
Purification:	Affinity Purified
Conjugation:	Unconjugated
Storage:	Store at -20°C as received.
Stability:	Stable for 12 months from date of receipt.
Predicted Protein Size:	69 kDa
Gene Name:	argonaute 3, RISC catalytic component
Database Link:	NP_803171 Entrez Gene 192669 Human Q9H9G7
Background:	EIF2C3 is a member of the Argonaute family of proteins which play a role in RNA interference. The encoded protein is highly basic, contains a PAZ domain and a PIWI domain, and may play a role in short-interfering-RNA-mediated gene silencing. This gene is
Synonyms:	EIF2C3
Note:	Immunogen Sequence Homology: Dog: 100%; Pig: 100%; Rat: 100%; Horse: 100%; Human: 100%; Mouse: 100%; Bovine: 100%; Rabbit: 100%; Zebrafish: 100%; Guinea pig: 85%



[View online »](#)

Protein Families: Druggable Genome

Product images:



WB Suggested Anti-EIF2C3 Antibody Titration: 0.2-1 ug/ml; ELISA Titer: 1:312500; Positive Control: Human Thymus