

Product datasheet for **TA344192**

SCDGF (PDGFD) Rabbit Polyclonal Antibody

Product data:

Product Type:	Primary Antibodies
Applications:	WB
Recommended Dilution:	WB
Reactivity:	Human
Host:	Rabbit
Isotype:	IgG
Clonality:	Polyclonal
Immunogen:	The immunogen for anti-PDGFD antibody: synthetic peptide directed towards the N terminal of human PDGFD. Synthetic peptide located within the following region: NANLRRDESNHLTDLYRRDETIQVKGNGYVQSPRFPNSYPRNLLLTWRLH
Formulation:	Liquid. Purified antibody supplied in 1x PBS buffer with 0.09% (w/v) sodium azide and 2% sucrose. <i>Note that this product is shipped as lyophilized powder to China customers.</i>
Purification:	Affinity Purified
Conjugation:	Unconjugated
Storage:	Store at -20°C as received.
Stability:	Stable for 12 months from date of receipt.
Predicted Protein Size:	40 kDa
Gene Name:	platelet derived growth factor D
Database Link:	NP_079484 Entrez Gene 80310 Human Q9GZP0
Background:	The protein encoded by this gene is a member of the platelet-derived growth factor family. The four members of this family are mitogenic factors for cells of mesenchymal origin and are characterized by a core motif of eight cysteines, seven of which are f
Synonyms:	IEGF; MSTP036; SCDGF-B; SCDGFB
Note:	Immunogen Sequence Homology: Pig: 100%; Rat: 100%; Horse: 100%; Human: 100%; Guinea pig: 100%; Rabbit: 93%; Mouse: 86%

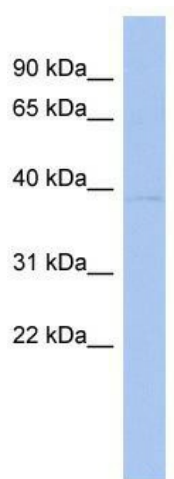


[View online »](#)

Protein Families: Druggable Genome, Secreted Protein

Protein Pathways: Focal adhesion, Gap junction, Melanoma, Prostate cancer, Regulation of actin cytoskeleton

Product images:



WB Suggested Anti-PDGFD Antibody Titration:
0.2-1 ug/ml; ELISA Titer: 1:312500; Positive
Control: Human heart