

Product datasheet for **TA344190**

WNT3A Rabbit Polyclonal Antibody

Product data:

Product Type:	Primary Antibodies
Applications:	IHC, WB
Recommended Dilution:	WB, IHC
Reactivity:	Human
Host:	Rabbit
Isotype:	IgG
Clonality:	Polyclonal
Immunogen:	The immunogen for anti-WNT3A antibody: synthetic peptide directed towards the N terminal of human WNT3A. Synthetic peptide located within the following region: MAPLGYFLLLCSLKQALGSYPIWWSLAVGPQYSSLGSQPILCASIPGLVP
Formulation:	Liquid. Purified antibody supplied in 1x PBS buffer with 0.09% (w/v) sodium azide and 2% sucrose. <i>Note that this product is shipped as lyophilized powder to China customers.</i>
Purification:	Affinity Purified
Conjugation:	Unconjugated
Storage:	Store at -20°C as received.
Stability:	Stable for 12 months from date of receipt.
Predicted Protein Size:	39 kDa
Gene Name:	Wnt family member 3A
Database Link:	NP_149122 Entrez Gene 89780 Human P56704
Background:	The WNT gene family consists of structurally related genes which encode secreted signaling proteins. These proteins have been implicated in oncogenesis and in several developmental processes, including regulation of cell fate and patterning during embryog
Synonyms:	MGC119418; MGC119419; MGC119420
Note:	Immunogen Sequence Homology: Human: 100%; Pig: 93%; Horse: 93%; Rat: 86%; Mouse: 86%; Dog: 79%; Bovine: 79%; Rabbit: 79%; Zebrafish: 79%; Guinea pig: 79%

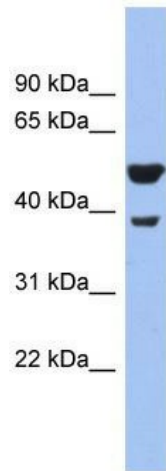


[View online »](#)

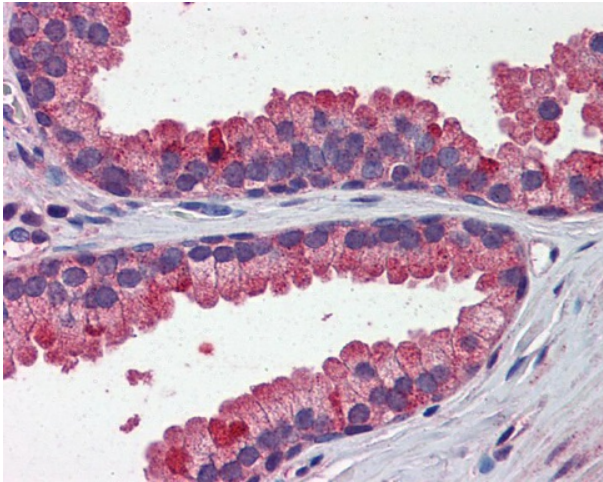
Protein Families: Adult stem cells, Cancer stem cells, Druggable Genome, ES Cell Differentiation/IPS, Induced pluripotent stem cells, Secreted Protein, Stem cell relevant signaling - Wnt Signaling pathway

Protein Pathways: Basal cell carcinoma, Hedgehog signaling pathway, Melanogenesis, Pathways in cancer, Wnt signaling pathway

Product images:



WB Suggested Anti-WNT3A Antibody Titration:
0.2-1 ug/ml; ELISA Titer: 1:312500; Positive
Control: Human heart



prostate