

Product datasheet for **TA344189**

WNT3A Rabbit Polyclonal Antibody

Product data:

Product Type:	Primary Antibodies
Applications:	IHC, WB
Recommended Dilution:	WB, IHC
Reactivity:	Human, Mouse
Host:	Rabbit
Isotype:	IgG
Clonality:	Polyclonal
Immunogen:	The immunogen for anti-Wnt3a antibody: synthetic peptide corresponding to a region of Mouse. Synthetic peptide located within the following region: IGDFLKDKYDSASEMVVEKHRESRGWVETLRPRYTYFKVPTERDLVYYEA
Formulation:	Liquid. Purified antibody supplied in 1x PBS buffer with 0.09% (w/v) sodium azide and 2% sucrose. <i>Note that this product is shipped as lyophilized powder to China customers.</i>
Purification:	Affinity Purified
Conjugation:	Unconjugated
Storage:	Store at -20°C as received.
Stability:	Stable for 12 months from date of receipt.
Predicted Protein Size:	38 kDa
Gene Name:	Wnt family member 3A
Database Link:	NP_149122 Entrez Gene 22416 Mouse Entrez Gene 89780 Human P56704
Background:	Wnt3a is a ligand for members of the frizzled family of seven transmembrane receptors. Wnt-3 and Wnt-3a play distinct roles in cell-cell signaling during morphogenesis of the developing neural tube.
Synonyms:	MGC119418; MGC119419; MGC119420
Note:	Immunogen Sequence Homology: Pig: 100%; Rat: 100%; Human: 100%; Mouse: 100%; Bovine: 100%; Dog: 93%; Horse: 93%; Guinea pig: 93%; Rabbit: 86%; Zebrafish: 75%

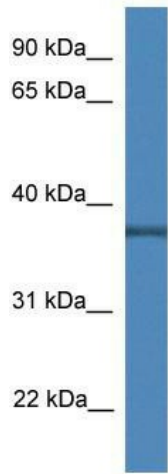


[View online »](#)

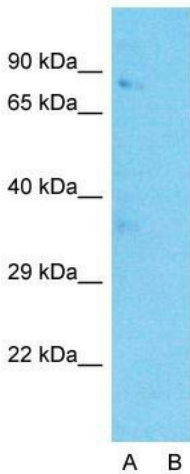
Protein Families: Adult stem cells, Cancer stem cells, Druggable Genome, ES Cell Differentiation/IPS, Induced pluripotent stem cells, Secreted Protein, Stem cell relevant signaling - Wnt Signaling pathway

Protein Pathways: Basal cell carcinoma, Hedgehog signaling pathway, Melanogenesis, Pathways in cancer, Wnt signaling pathway

Product images:



WB Suggested Anti-Wnt3a Antibody Titration: 1 ug/ml; Positive Control: Mouse Heart lysate



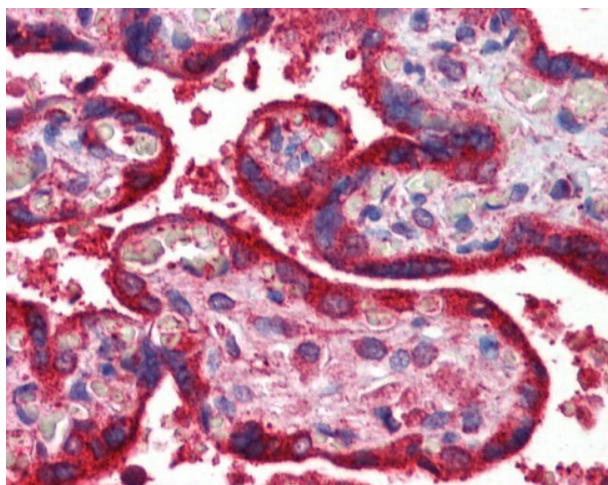
Anti-Wnt3a Western Blot & Peptide Block Validation

Lysate: Mouse Heart

Lane A: Primary Antibody
Lane B: Primary Antibody + Blocking Peptide

Primary Antibody Concentration: 1.0µg/ml
Peptide Concentration: 5.0µg/ml
Lysate Quantity: 25µg/lane
Gel Concentration: 12%

Host: Rabbit; Target Name: Wnt3a; Sample Tissue: Mouse Heart; Lane A: Primary Antibody; Lane B: Primary Antibody + Blocking Peptide ; Primary Antibody Concentration:1 ug/ml; Peptide Concentration: 5ug/ml; Lysate Quantity: 25ug/lane; Gel Concentration: 0.12%



Immunohistochemistry with Placenta tissue at an antibody concentration of Dilution: 1:500 using anti-Wnt3a antibody