

Product datasheet for **TA344188**

RASGRP2 Rabbit Polyclonal Antibody

Product data:

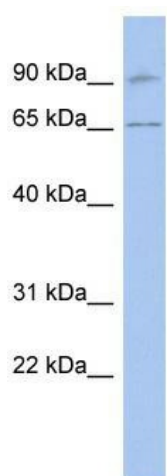
Product Type:	Primary Antibodies
Applications:	WB
Recommended Dilution:	WB
Reactivity:	Human
Host:	Rabbit
Isotype:	IgG
Clonality:	Polyclonal
Immunogen:	The immunogen for anti-RASGRP2 antibody: synthetic peptide directed towards the N terminal of human RASGRP2. Synthetic peptide located within the following region: LVRMFLMMHPWYIPSSQLAAKLLHIYQSRKDNSNSLQVKTCHLVRYWIS
Formulation:	Liquid. Purified antibody supplied in 1x PBS buffer with 0.09% (w/v) sodium azide and 2% sucrose. <i>Note that this product is shipped as lyophilized powder to China customers.</i>
Purification:	Affinity Purified
Conjugation:	Unconjugated
Storage:	Store at -20°C as received.
Stability:	Stable for 12 months from date of receipt.
Predicted Protein Size:	69 kDa
Gene Name:	RAS guanyl releasing protein 2
Database Link:	NP_722541 Entrez Gene 10235 Human Q7LDG7
Background:	The protein encoded by this gene is a brain-enriched nucleotide exchanged factor that contains an N-terminal GEF domain, 2 tandem repeats of EF-hand calcium-binding motifs, and a C-terminal diacylglycerol/phorbol ester-binding domain. This protein can act
Synonyms:	CALDAG-GEFI; CDC25L
Note:	Immunogen Sequence Homology: Dog: 100%; Pig: 100%; Rat: 100%; Human: 100%; Guinea pig: 100%; Mouse: 93%; Bovine: 93%; Rabbit: 93%



[View online »](#)

Protein Pathways: Chemokine signaling pathway, MAPK signaling pathway

Product images:



WB Suggested Anti-RASGRP2 Antibody Titration:
0.2-1 ug/ml; ELISA Titer: 1:312500; Positive
Control: Human brain