

Product datasheet for **TA344187**

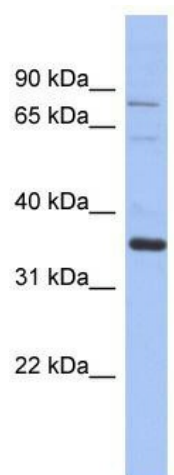
NRBP2 Rabbit Polyclonal Antibody

Product data:

| | |
|-------------------------|---------------------------------------------------------------------------------------------------------------------------------------------------------------------------------------------------------------------------|
| Product Type: | Primary Antibodies |
| Applications: | WB |
| Recommended Dilution: | WB |
| Reactivity: | Human |
| Host: | Rabbit |
| Isotype: | IgG |
| Clonality: | Polyclonal |
| Immunogen: | The immunogen for anti-NRBP2 antibody: synthetic peptide directed towards the middle region of human NRBP2. Synthetic peptide located within the following region: VIQMQCNLERSEDKARWHLTLLLVLLEDRLHRQLTYDLLPTDSAQDLASEL |
| Formulation: | Liquid. Purified antibody supplied in 1x PBS buffer with 0.09% (w/v) sodium azide and 2% sucrose. <i>Note that this product is shipped as lyophilized powder to China customers.</i> |
| Purification: | Affinity Purified |
| Conjugation: | Unconjugated |
| Storage: | Store at -20°C as received. |
| Stability: | Stable for 12 months from date of receipt. |
| Predicted Protein Size: | 30 kDa |
| Gene Name: | nuclear receptor binding protein 2 |
| Database Link: | NP_848659 Entrez Gene 340371 Human Q9NSY0 |
| Background: | The specific function of this protein remains unknown. |
| Synonyms: | pp9320; TRG16 |
| Note: | Immunogen Sequence Homology: Dog: 100%; Rat: 100%; Horse: 100%; Human: 100%; Mouse: 100%; Bovine: 100%; Pig: 93%; Guinea pig: 93% |
| Protein Families: | Druggable Genome, Protein Kinase |



[View online »](#)

Product images:

WB Suggested Anti-NRBP2 Antibody Titration:
0.2-1 ug/ml; ELISA Titer: 1:312500; Positive
Control: Human Placenta