

## Product datasheet for **TA344186**

### Nucleostemin (GNL3) Rabbit Polyclonal Antibody

#### Product data:

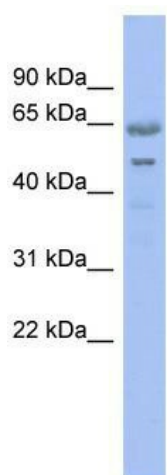
Product Type:	Primary Antibodies
Applications:	WB
Recommended Dilution:	WB
Reactivity:	Human, Mouse
Host:	Rabbit
Isotype:	IgG
Clonality:	Polyclonal
Immunogen:	The immunogen for anti-GNL3 antibody: synthetic peptide directed towards the N terminal of human GNL3. Synthetic peptide located within the following region: MTCHKRYKIQKKVREHHRKLRKEAKKRGHKKPRKDPGVPNSAPFKEALLR
Formulation:	Liquid. Purified antibody supplied in 1x PBS buffer with 0.09% (w/v) sodium azide and 2% sucrose. <i>Note that this product is shipped as lyophilized powder to China customers.</i>
Purification:	Affinity Purified
Conjugation:	Unconjugated
Storage:	Store at -20°C as received.
Stability:	Stable for 12 months from date of receipt.
Predicted Protein Size:	60 kDa
Gene Name:	G protein nucleolar 3
Database Link:	<a href="#">NP_996561</a> <a href="#">Entrez Gene 30877 Mouse</a> <a href="#">Entrez Gene 26354 Human</a> <a href="#">Q9BVP2</a>
Background:	GNL3 may be required to maintain the proliferative capacity of stem cells and may play an important role in tumorigenesis.
Synonyms:	C77032; E2IG3; NNP47; NS
Note:	Immunogen Sequence Homology: Horse: 100%; Human: 100%; Mouse: 100%; Rat: 93%; Bovine: 93%; Dog: 86%; Pig: 86%; Rabbit: 86%; Guinea pig: 86%



[View online »](#)

Protein Families: ES Cell Differentiation/IPS, Stem cell - Pluripotency

### Product images:



WB Suggested Anti-GNL3 Antibody Titration: 0.2-1 ug/ml; ELISA Titer: 1:312500; Positive Control: Human Stomach