

Product datasheet for **TA344184**

JARID2 Rabbit Polyclonal Antibody

Product data:

Product Type:	Primary Antibodies
Applications:	WB
Recommended Dilution:	WB
Reactivity:	Human
Host:	Rabbit
Isotype:	IgG
Clonality:	Polyclonal
Immunogen:	The immunogen for anti-JARID2 antibody: synthetic peptide directed towards the N terminal of human JARID2. Synthetic peptide located within the following region: THKHHVHNGHVFNGSSRSTREKEPVQKHKSKEATPAKEKHSDHRADSRREQ
Formulation:	Liquid. Purified antibody supplied in 1x PBS buffer with 0.09% (w/v) sodium azide and 2% sucrose. <i>Note that this product is shipped as lyophilized powder to China customers.</i>
Purification:	Affinity Purified
Conjugation:	Unconjugated
Storage:	Store at -20°C as received.
Stability:	Stable for 12 months from date of receipt.
Predicted Protein Size:	139 kDa
Gene Name:	jumonji and AT-rich interaction domain containing 2
Database Link:	NP_004964 Entrez Gene 3720 Human Q92833
Background:	This gene is an ortholog of the mouse jumonji gene, which encodes a nuclear protein essential for mouse embryogenesis, including neural tube formation. Overexpression of mouse jumonji negatively regulates cell proliferation. The jumonji proteins contain a
Synonyms:	JMJ
Note:	Immunogen Sequence Homology: Rat: 100%; Human: 100%; Dog: 93%; Rabbit: 93%; Pig: 86%; Bovine: 86%; Guinea pig: 86%; Mouse: 79%

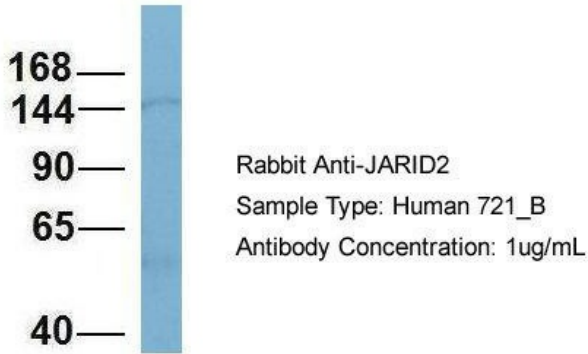


[View online »](#)

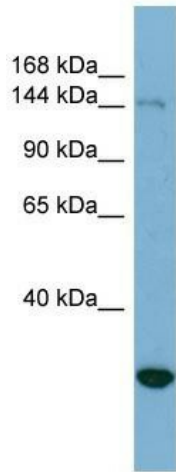
Protein Families: Transcription Factors

Product images:

JARID2



Host: Rabbit; Target Name: JARID2; Sample Tissue: 721_B; Antibody Dilution: 1.0 ug/ml. JARID2 is strongly supported by BioGPS gene expression data to be expressed in Human 721_B cells



WB Suggested Anti-JARID2 Antibody Titration: 0.2-1 ug/ml; ELISA Titer: 1:312500; Positive Control: HeLa cell lysate. JARID2 is supported by BioGPS gene expression data to be expressed in HeLa