

## Product datasheet for **TA344180**

### ATG4C Rabbit Polyclonal Antibody

#### Product data:

Product Type:	Primary Antibodies
Applications:	WB
Recommended Dilution:	WB
Reactivity:	Human
Host:	Rabbit
Isotype:	IgG
Clonality:	Polyclonal
Immunogen:	The immunogen for anti-ATG4C antibody: synthetic peptide directed towards the middle region of human ATG4C. Synthetic peptide located within the following region: TISLKETIGKYSDDHEMRNEVYHRKIISWFGDSPLALFGLHQLIEYGKKS
Formulation:	Liquid. Purified antibody supplied in 1x PBS buffer with 0.09% (w/v) sodium azide and 2% sucrose. <i>Note that this product is shipped as lyophilized powder to China customers.</i>
Purification:	Affinity Purified
Conjugation:	Unconjugated
Storage:	Store at -20°C as received.
Stability:	Stable for 12 months from date of receipt.
Predicted Protein Size:	52 kDa
Gene Name:	autophagy related 4C cysteine peptidase
Database Link:	<a href="#">NP_835739</a> <a href="#">Entrez Gene 84938 Human</a> <a href="#">Q96DT6</a>



[View online »](#)

**Background:**

Autophagy is the process by which endogenous proteins and damaged organelles are destroyed intracellularly. Autophagy is postulated to be essential for cell homeostasis and cell remodeling during differentiation, metamorphosis, non-apoptotic cell death, and aging. Reduced levels of autophagy have been described in some malignant tumors, and a role for autophagy in controlling the unregulated cell growth linked to cancer has been proposed. This gene encodes a member of the autophagin protein family. The encoded protein is also designated as a member of the C-54 family of cysteine proteases. Alternate transcriptional splice variants, encoding the same protein, have been characterized.

**Synonyms:**

APG4-C; APG4C; AUTL1; AUTL3

**Note:**

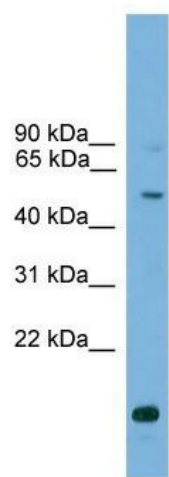
Immunogen Sequence Homology: Human: 100%; Dog: 91%; Horse: 86%; Bovine: 75%

**Protein Families:**

Protease

**Protein Pathways:**

Regulation of autophagy

**Product images:**

WB Suggested Anti-ATG4C Antibody Titration: 0.2-1 ug/ml; ELISA Titer: 1:62500; Positive Control: 721\_B cell lysate