

## Product datasheet for **TA344177**

### Calreticulin (CALR) Rabbit Polyclonal Antibody

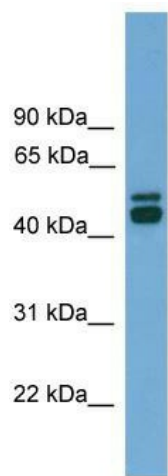
#### Product data:

Product Type:	Primary Antibodies
Applications:	WB
Recommended Dilution:	WB
Reactivity:	Human, Mouse
Host:	Rabbit
Isotype:	IgG
Clonality:	Polyclonal
Immunogen:	The immunogen for anti-CALR antibody: synthetic peptide directed towards the middle region of human CALR. Synthetic peptide located within the following region: ASKPEDWDERAKIDDPTDSKPEDWDKPEHIPDPDAKKPEDWDEEMDGEWE
Formulation:	Liquid. Purified antibody supplied in 1x PBS buffer with 0.09% (w/v) sodium azide and 2% sucrose. <i>Note that this product is shipped as lyophilized powder to China customers.</i>
Purification:	Affinity Purified
Conjugation:	Unconjugated
Storage:	Store at -20°C as received.
Stability:	Stable for 12 months from date of receipt.
Predicted Protein Size:	46 kDa
Gene Name:	calreticulin
Database Link:	<a href="#">NP_004334</a> <a href="#">Entrez Gene 12317 Mouse</a> <a href="#">Entrez Gene 811 Human</a> <a href="#">P27797</a>



[View online »](#)

- Background:** Calreticulin is a multifunctional protein that acts as a major Ca<sup>2+</sup>-binding (storage) protein in the lumen of the endoplasmic reticulum. It is also found in the nucleus, suggesting that it may have a role in transcription regulation. Calreticulin binds to the synthetic peptide KLGFFKR, which is almost identical to an amino acid sequence in the DNA-binding domain of the superfamily of nuclear receptors. Calreticulin binds to antibodies in certain sera of systemic lupus and Sjogren patients which contain anti-Ro/SSA antibodies, it is highly conserved among species, and it is located in the endoplasmic and sarcoplasmic reticulum where it may bind calcium.
- Synonyms:** cC1qR; CRT; HEL-S-99n; RO; SSA
- Note:** Immunogen Sequence Homology: Dog: 100%; Pig: 100%; Rat: 100%; Horse: 100%; Human: 100%; Mouse: 100%; Bovine: 100%; Rabbit: 100%; Guinea pig: 100%; Zebrafish: 86%
- Protein Families:** Druggable Genome, Secreted Protein, Transcription Factors
- Protein Pathways:** Antigen processing and presentation
- Product images:**



WB Suggested Anti-CALR Antibody Titration: 0.2-1 ug/ml; ELISA Titer: 1:312500; Positive Control: Human brain