

Product datasheet for **TA344170**

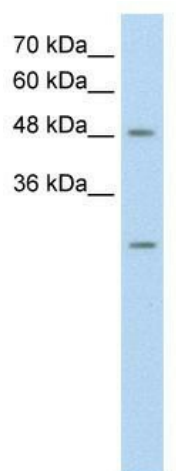
ANKRD2 Rabbit Polyclonal Antibody

Product data:

Product Type:	Primary Antibodies
Applications:	WB
Recommended Dilution:	WB
Reactivity:	Human
Host:	Rabbit
Isotype:	IgG
Clonality:	Polyclonal
Immunogen:	The immunogen for anti-ANKRD2 antibody: synthetic peptide directed towards the N terminal of human ANKRD2. Synthetic peptide located within the following region: QEEENEKLRGDARQKLPMDLLVLEDEKHHGAQSAALQKVKGQERVRKTSL
Formulation:	Liquid. Purified antibody supplied in 1x PBS buffer with 0.09% (w/v) sodium azide and 2% sucrose. <i>Note that this product is shipped as lyophilized powder to China customers.</i>
Purification:	Affinity Purified
Conjugation:	Unconjugated
Storage:	Store at -20°C as received.
Stability:	Stable for 12 months from date of receipt.
Predicted Protein Size:	49 kDa
Gene Name:	ankyrin repeat domain 2
Database Link:	NP_001123453 Entrez Gene 26287 Human Q9GZV1
Background:	ANKRD2 may play an important role in skeletal muscle hypertrophy.
Synonyms:	ARPP
Note:	Immunogen Sequence Homology: Dog: 100%; Pig: 100%; Rat: 100%; Horse: 100%; Human: 100%; Mouse: 100%; Bovine: 100%; Rabbit: 100%; Guinea pig: 100%



[View online »](#)

Product images:

WB Suggested Anti-ANKRD2 Antibody Titration:
0.2-1 ug/ml; Positive Control: HepG2 cell lysate