

Product datasheet for **TA344168**

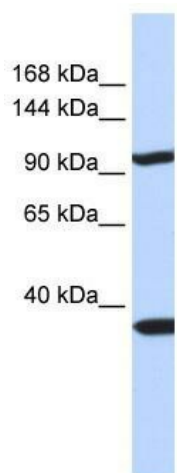
PAPP A2 (PAPPA2) Rabbit Polyclonal Antibody

Product data:

Product Type:	Primary Antibodies
Applications:	WB
Recommended Dilution:	WB
Reactivity:	Human
Host:	Rabbit
Isotype:	IgG
Clonality:	Polyclonal
Immunogen:	The immunogen for anti-PAPPA2 antibody: synthetic peptide directed towards the N terminal of human PAPPA2. Synthetic peptide located within the following region: PPDLTENPAGLRGAVEEPAAPWVGDSPIGQSELLGDDDDAYLGNQRSKESL
Formulation:	Liquid. Purified antibody supplied in 1x PBS buffer with 0.09% (w/v) sodium azide and 2% sucrose. <i>Note that this product is shipped as lyophilized powder to China customers.</i>
Purification:	Affinity Purified
Conjugation:	Unconjugated
Storage:	Store at -20°C as received.
Stability:	Stable for 12 months from date of receipt.
Predicted Protein Size:	92 kDa
Gene Name:	pappalysin 2
Database Link:	NP_068755 Entrez Gene 60676 Human Q9BXP8
Background:	PAPPA2 is a metalloproteinase which specifically cleaves IGFBP-5. It shows limited proteolysis toward IGFBP-3.
Synonyms:	PAPP-A2; PAPP-E; PAPPE; PLAC3
Note:	Immunogen Sequence Homology: Human: 100%; Rat: 86%; Pig: 85%; Guinea pig: 85%
Protein Families:	Protease, Secreted Protein



[View online »](#)

Product images:

WB Suggested Anti-PAPPA2 Antibody Titration:
0.2-1 ug/ml; ELISA Titer: 1: 312500; Positive
Control: 293T cell lysate; PAPPA2 is strongly
supported by BioGPS gene expression data to be
expressed in Human HEK293T cells