

## Product datasheet for **TA344166**

### **C21orf7 (MAP3K7CL) Rabbit Polyclonal Antibody**

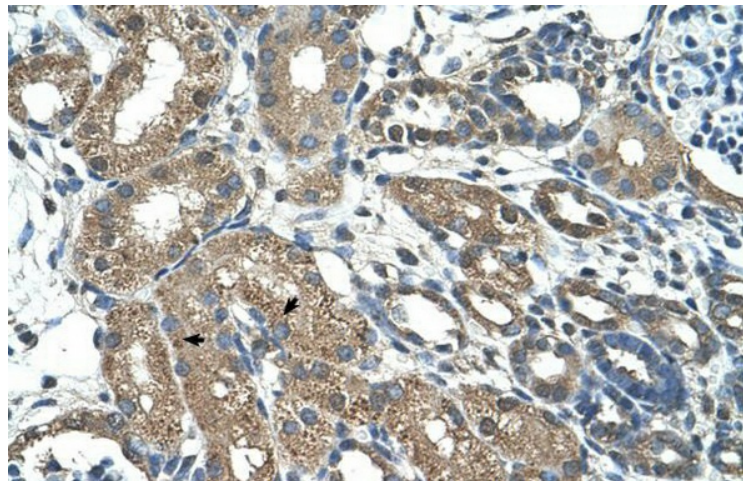
#### **Product data:**

<b>Product Type:</b>	Primary Antibodies
<b>Applications:</b>	IHC
<b>Recommended Dilution:</b>	WB, IHC
<b>Reactivity:</b>	Human
<b>Host:</b>	Rabbit
<b>Isotype:</b>	IgG
<b>Clonality:</b>	Polyclonal
<b>Immunogen:</b>	The immunogen for anti-C21orf7 antibody: synthetic peptide directed towards the C terminal of human C21orf7. Synthetic peptide located within the following region: DSEESMEVFKQHCQIAEEYHEVKKEITLLEQRKKELIAKLDQAEKEKVDA
<b>Formulation:</b>	Liquid. Purified antibody supplied in 1x PBS buffer with 0.09% (w/v) sodium azide and 2% sucrose. <i>Note that this product is shipped as lyophilized powder to China customers.</i>
<b>Purification:</b>	Affinity Purified
<b>Conjugation:</b>	Unconjugated
<b>Storage:</b>	Store at -20°C as received.
<b>Stability:</b>	Stable for 12 months from date of receipt.
<b>Predicted Protein Size:</b>	27 kDa
<b>Gene Name:</b>	MAP3K7 C-terminal like
<b>Database Link:</b>	<a href="#">NP_064537</a> <a href="#">Entrez Gene 56911 Human</a> <a href="#">P57077</a>
<b>Background:</b>	C21orf7 plays a critical role in the TGF-beta signaling transduction pathway.
<b>Synonyms:</b>	C21orf7; HC21ORF7; TAK1L; TAKL; TAKL-1; TAKL-2; TAKL-4
<b>Note:</b>	Immunogen Sequence Homology: Pig: 100%; Rat: 100%; Human: 100%; Mouse: 100%; Bovine: 100%; Rabbit: 100%; Guinea pig: 100%; Dog: 93%; Horse: 93%
<b>Protein Families:</b>	Transcription Factors



[View online »](#)

Product images:



Human kidney