

Product datasheet for **TA344165**

LGALS14 Rabbit Polyclonal Antibody

Product data:

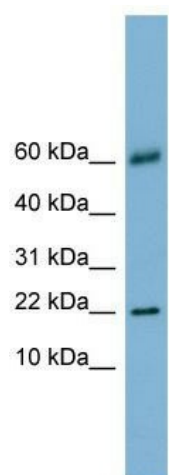
Product Type:	Primary Antibodies
Applications:	WB
Recommended Dilution:	WB
Reactivity:	Human
Host:	Rabbit
Isotype:	IgG
Clonality:	Polyclonal
Immunogen:	The immunogen for anti-LGALS14 antibody: synthetic peptide directed towards the N terminal of human LGALS14. Synthetic peptide located within the following region: MSSLPVPYTLPVSLPVGSCVITGTPIILTFVKDPQLEVNFYTGMDSDI
Formulation:	Liquid. Purified antibody supplied in 1x PBS buffer with 0.09% (w/v) sodium azide and 2% sucrose. <i>Note that this product is shipped as lyophilized powder to China customers.</i>
Purification:	Affinity Purified
Conjugation:	Unconjugated
Storage:	Store at -20°C as received.
Stability:	Stable for 12 months from date of receipt.
Predicted Protein Size:	16 kDa
Gene Name:	galectin 14
Database Link:	NP_064514 Entrez Gene 56891 Human Q8TCE9
Background:	This gene is predominantly expressed in placenta. The encoded protein belongs to the galectin (galaptin/S-lectin) family. The members of galectin family contain one or two carbohydrate recognition domains, which can bind beta-galactoside. Two alternative
Synonyms:	CLC2; PPL13
Note:	Immunogen Sequence Homology: Human: 100%



[View online »](#)

Protein Families: Transmembrane

Product images:



WB Suggested Anti-LGALS14 Antibody Titration:
0.2-1 ug/ml; Positive Control: Human Stomach