

Product datasheet for **TA344163**

GTPBP2 Rabbit Polyclonal Antibody

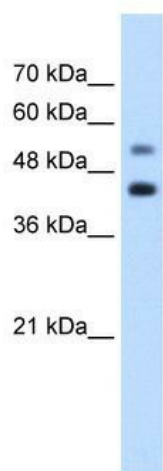
Product data:

Product Type:	Primary Antibodies
Applications:	WB
Recommended Dilution:	WB
Reactivity:	Human
Host:	Rabbit
Isotype:	IgG
Clonality:	Polyclonal
Immunogen:	The immunogen for anti-GTPBP2 antibody: synthetic peptide directed towards the C terminal of human GTPBP2. Synthetic peptide located within the following region: VLLFHATTFRRGFQVTVHVGNVQRQTAVVEKIHAKDKLRTGEKAVVRFRL
Formulation:	Liquid. Purified antibody supplied in 1x PBS buffer with 0.09% (w/v) sodium azide and 2% sucrose. <i>Note that this product is shipped as lyophilized powder to China customers.</i>
Purification:	Affinity Purified
Conjugation:	Unconjugated
Storage:	Store at -20°C as received.
Stability:	Stable for 12 months from date of receipt.
Predicted Protein Size:	48 kDa
Gene Name:	GTP binding protein 2
Database Link:	NP_061969 Entrez Gene 54676 Human Q9BX10
Background:	GTP-binding proteins, or G proteins, constitute a superfamily capable of binding GTP or GDP. G proteins are activated by binding GTP and are inactivated by hydrolyzing GTP to GDP. This general mechanism enables G proteins to perform a wide range of biologic activities.
Synonyms:	MGC74725
Note:	Immunogen Sequence Homology: Dog: 100%; Pig: 100%; Rat: 100%; Horse: 100%; Human: 100%; Mouse: 100%; Bovine: 100%; Rabbit: 100%; Guinea pig: 100%; Goat: 93%



[View online »](#)

Product images:



WB Suggested Anti-GTPBP2 Antibody Titration:
1.25 ug/ml; Positive Control: Jurkat cell lysate