

## Product datasheet for **TA344162**

### GTPBP2 Rabbit Polyclonal Antibody

#### Product data:

Product Type:	Primary Antibodies
Applications:	WB
Recommended Dilution:	WB
Reactivity:	Human
Host:	Rabbit
Isotype:	IgG
Clonality:	Polyclonal
Immunogen:	The immunogen for anti-GTPBP2 antibody: synthetic peptide directed towards the N terminal of human GTPBP2. Synthetic peptide located within the following region: GCGGPKGKKKNGRNRGGKANNPPYLPPEAEDGNIEYKLLVNPQSQRFEH
Formulation:	Liquid. Purified antibody supplied in 1x PBS buffer with 0.09% (w/v) sodium azide and 2% sucrose. <i>Note that this product is shipped as lyophilized powder to China customers.</i>
Purification:	Affinity Purified
Conjugation:	Unconjugated
Storage:	Store at -20°C as received.
Stability:	Stable for 12 months from date of receipt.
Predicted Protein Size:	66 kDa
Gene Name:	GTP binding protein 2
Database Link:	<a href="#">NP_061969</a> <a href="#">Entrez Gene 54676 Human Q9BX10</a>



[View online »](#)

**Background:**

GTP-binding proteins, or G proteins, constitute a superfamily capable of binding GTP or GDP. G proteins are activated by binding GTP and are inactivated by hydrolyzing GTP to GDP. This general mechanism enables G proteins to perform a wide range of biologic activities. GTP-binding proteins, or G proteins, constitute a superfamily capable of binding GTP or GDP. G proteins are activated by binding GTP and are inactivated by hydrolyzing GTP to GDP. This general mechanism enables G proteins to perform a wide range of biologic activities. [supplied by OMIM]. PRIMARYREFSEQ\_SPAN PRIMARY\_IDENTIFIER PRIMARY\_SPAN COMP 1-2966 BC064968.1 1-2966 2967-2996 BU736981.1 1-30 c

**Synonyms:**

MGC74725

**Note:**

Immunogen Sequence Homology: Dog: 100%; Pig: 100%; Rat: 100%; Horse: 100%; Human: 100%; Mouse: 100%; Bovine: 100%; Guinea pig: 100%; Goat: 93%; Zebrafish: 86%

**Product images:**

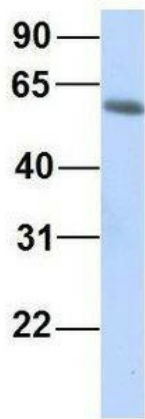

WB Suggested Anti-GTPBP2 Antibody Titration:  
0.2-1 ug/ml; ELISA Titer: 1: 62500; Positive  
Control: Transfected 293T

**GTPBP2**


Rabbit Anti-GTPBP2  
Sample Type: Human Fetal Liver  
Antibody Concentration: 1ug/mL

Host: Rabbit; Target Name: GTPBP2; Sample  
Tissue: Human Fetal Liver; Antibody Dilution: 1.0  
ug/ml

## GTPBP2



Rabbit Anti-GTPBP2  
Sample Type: Human Fetal Lung  
Antibody Concentration: 1ug/mL

Host: Rabbit; Target Name: GTPBP2; Sample  
Tissue: Human Fetal Lung; Antibody Dilution: 1.0  
ug/ml