

Product datasheet for **TA344157**

ERMAP Rabbit Polyclonal Antibody

Product data:

| | |
|-------------------------|---|
| Product Type: | Primary Antibodies |
| Applications: | WB |
| Recommended Dilution: | WB |
| Reactivity: | Human |
| Host: | Rabbit |
| Isotype: | IgG |
| Clonality: | Polyclonal |
| Immunogen: | The immunogen for anti-ERMAP antibody: synthetic peptide directed towards the middle region of human ERMAP. Synthetic peptide located within the following region: RSELKLRKRAAANSWRRARLHFVAVTLPDPTAHPKLLI SEDQRCVRLGDR |
| Formulation: | Liquid. Purified antibody supplied in 1x PBS buffer with 0.09% (w/v) sodium azide and 2% sucrose. <i>Note that this product is shipped as lyophilized powder to China customers.</i> |
| Purification: | Affinity Purified |
| Conjugation: | Unconjugated |
| Storage: | Store at -20°C as received. |
| Stability: | Stable for 12 months from date of receipt. |
| Predicted Protein Size: | 52 kDa |
| Gene Name: | erythroblast membrane associated protein (Scianna blood group) |
| Database Link: | NP_061008 Entrez Gene 114625 Human Q96PL5 |



[View online »](#)

Background:

ERMAP is a cell surface transmembrane protein that may act as an erythroid cell receptor, possibly as a mediator of cell adhesion. Polymorphisms in the gene encoding ERMAP protein are responsible for the Scianna/Radin blood group system. The protein encoded by this gene is a cell surface transmembrane protein that may act as an erythroid cell receptor, possibly as a mediator of cell adhesion. Polymorphisms in this gene are responsible for the Scianna/Radin blood group system. Two transcript variants encoding the same protein have been found for this gene.

Synonyms:

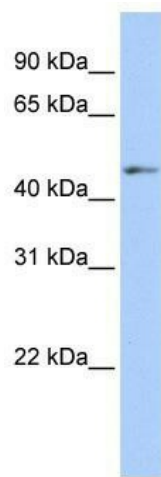
BTN5; PRO2801; RD; SC

Note:

Immunogen Sequence Homology: Dog: 100%; Rat: 100%; Horse: 100%; Human: 100%; Mouse: 100%; Zebrafish: 100%; Pig: 92%; Rabbit: 92%; Guinea pig: 92%

Protein Families:

Druggable Genome, Transmembrane

Product images:

WB Suggested Anti-ERMAP Antibody Titration:
0.2-1 ug/ml; ELISA Titer: 1: 312500; Positive
Control: Human Placenta