

Product datasheet for TA344156

Gasdermin like (GSDMB) Rabbit Polyclonal Antibody

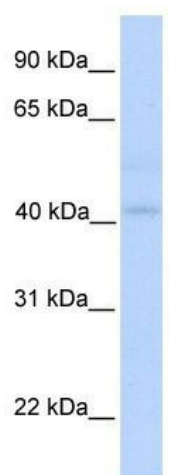
Product data:

Product Type:	Primary Antibodies
Applications:	WB
Recommended Dilution:	WB
Reactivity:	Human
Host:	Rabbit
Isotype:	IgG
Clonality:	Polyclonal
Immunogen:	The immunogen for anti-GSDML antibody: synthetic peptide directed towards the N terminal of human GSDML. Synthetic peptide located within the following region: HLVGEKRTFFGCRHYTTGLTLMIDLTDGDKWLDELDSGLQGQKAEFQIL
Formulation:	Liquid. Purified antibody supplied in 1x PBS buffer with 0.09% (w/v) sodium azide and 2% sucrose. <i>Note that this product is shipped as lyophilized powder to China customers.</i>
Purification:	Affinity Purified
Conjugation:	Unconjugated
Storage:	Store at -20°C as received.
Stability:	Stable for 12 months from date of receipt.
Predicted Protein Size:	45 kDa
Gene Name:	gasdermin B
Database Link:	NP_061000 Entrez Gene 55876 Human Q8TAX9
Background:	GSDML belongs to the gasdermin family. GSDML may play a role as secretory or metabolic product involved in secretory pathway. It may also play a role in achieving and maintaining the final differentiation state of epithelial cells.
Synonyms:	GSDML; PP4052; PRO2521
Note:	Immunogen Sequence Homology: Horse: 100%; Human: 100%



[View online »](#)

Product images:



WB Suggested Anti-GSDML Antibody Titration:
0.2-1 ug/ml; Positive Control: Human Muscle