

## Product datasheet for **TA344155**

### DOK5 Rabbit Polyclonal Antibody

#### Product data:

Product Type:	Primary Antibodies
Applications:	WB
Recommended Dilution:	WB
Reactivity:	Human
Host:	Rabbit
Isotype:	IgG
Clonality:	Polyclonal
Immunogen:	The immunogen for anti-DOK5 antibody: synthetic peptide directed towards the N terminal of human DOK5. Synthetic peptide located within the following region: GPKRLEKFSDERAAYFRCYHKVTELNNVKNVARLPKSTKKHAIGIYFNDD
Formulation:	Liquid. Purified antibody supplied in 1x PBS buffer with 0.09% (w/v) sodium azide and 2% sucrose. <i>Note that this product is shipped as lyophilized powder to China customers.</i>
Purification:	Affinity Purified
Conjugation:	Unconjugated
Storage:	Store at -20°C as received.
Stability:	Stable for 12 months from date of receipt.
Predicted Protein Size:	34 kDa
Gene Name:	docking protein 5
Database Link:	<a href="#">NP_060901</a> <a href="#">Entrez Gene 55816 Human</a> <a href="#">Q9P104</a>



[View online »](#)

**Background:**

DOK5 is a member of the DOK family of membrane proteins, which are adapter proteins involved in signal transduction. It interacts with phosphorylated receptor tyrosine kinases to mediate neurite outgrowth and activation of the MAP kinase pathway. In contrast to other DOK family proteins, this protein does not interact with RASGAP. The protein encoded by this gene is a member of the DOK family of membrane proteins, which are adapter proteins involved in signal transduction. The encoded protein interacts with phosphorylated receptor tyrosine kinases to mediate neurite outgrowth and activation of the MAP kinase pathway. In contrast to other DOK family proteins, this protein does not interact with RASGAP.

**Synonyms:**

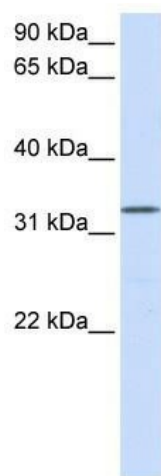
C20orf180; IRS-6; IRS6

**Note:**

Immunogen Sequence Homology: Dog: 100%; Pig: 100%; Rat: 100%; Horse: 100%; Human: 100%; Mouse: 100%; Rabbit: 100%; Guinea pig: 100%; Bovine: 93%

**Protein Families:**

Druggable Genome

**Product images:**

WB Suggested Anti-DOK5 Antibody Titration: 0.2-1 ug/ml; ELISA Titer: 1: 312500; Positive Control: Human Placenta